



Product Training 101

Presented by : David Carmack



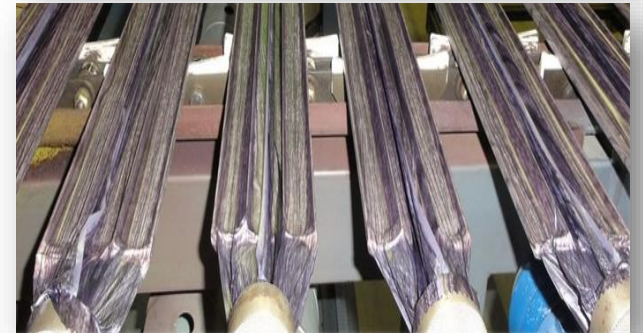
WHAT IS **KNOTWOOD**?

- Knotwood is a marine grade aluminum; coated with a durable powder and finished with a sublimated woodgrain pattern.
- The look and performance of decorative lumber with minimal maintenance.
- Leader in decorative aluminum woodgrain products and finishes.
- Unmatched color range and quality.
- System of patented extrusions and concealed fasteners.
- Installed with standard carpentry tools.



Material Specifications

- Extruded 6106 marine grade aluminum alloy to ensure corrosion resilience.
- Powder coating with electrostatic guns that make 80-120 μ (microns) powder paint layers.
 - Polymerization is performed by heating the profiles to 430°F for 30 minutes.
- Woodgrain Sublimation: this final production step turns the powder coating into a work of art, creating endless design possibilities.
 - Each profile is wrapped in a woodgrain template and placed into an oven where the ink pigments are converted from a solid into a gas, (allowing 100% penetration through the powder coat), then converted back to a solid, resulting in a perfect thermo print.



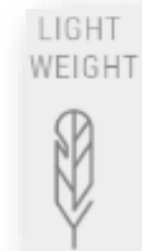
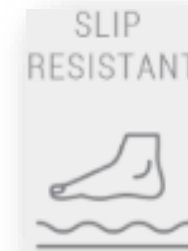
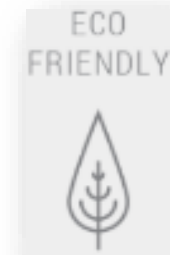
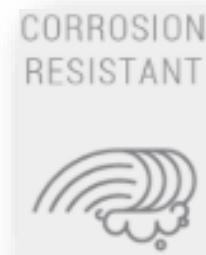
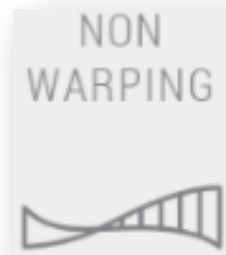
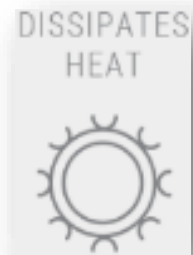
Certifications / Approvals / Awards

- AAMA 2604\2605 Certified for commercial and architectural – grade applications
- Miami-Dade Approval
- Class A Fire Rated
- Florida Building Code
- LEED Compliant
- VOC (Volatile Organic Compounds) Free



It's not wood, **it's aluminum**

Lighter, stronger, straighter than real wood.



The benefits of wood – the performance of aluminum

Save Time & Money on **MAINTENANCE**

- Under normal conditions maintenance for Knotwood requires a rinse down with water every 3+/- months.
- Mild detergent may be used but is not required.
- Note areas with hard water may require a water softener to avoid water spots.



Tools required for **INSTALLATION**

- General construction tools are sufficient for the vast majority of Knotwood installations.
 - Miter Saw – 10" or 12" (12" compound sliding miter saw is ideal)
 - Impact Drivers & magnetic socket set
 - Levels, measuring tape, dead blow hammer, safety goggles, ear plugs, etc.
- Non-ferrous cutting blade / 82-96 tooth (available at any local building supply store)
- #10 x ½" Self tapping hot-dipped galvanized fasteners (and/or epoxy coated) are required for install.
- Six10® 2-Part Epoxy by West System (End Cap Adhesive)



STANDARD WOOD GRAINS

- Currently 20 colors

SPECIAL ORDER WOOD GRAINS

- Over 25 different options
- Subject to extended lead times*
- Subject to minimum run quantities and raw material charges.



BUSH CHERRY



EASTERN MAHOGANY



KWILA



SAVANNAH OAK



TEAK BROWN



WESTERN RED CEDAR



WHITE ASH



ATLANTIC CEDAR



BLACKBUTT



CHESTNUT



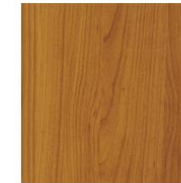
HICKORY



IROKO



KNOTTY PINE



LIGHT OAK



MAPLE



ROYAL OAK



SPOTTED GUM



TASSIE OAK



BLACK ASH



CHARCOAL ASH



BLACK WALNUT



WENGE



CONCRETE



AUSTRALIAN CEDAR



ENGLISH CHESTNUT



IRON BARK



KOA



RED GUM



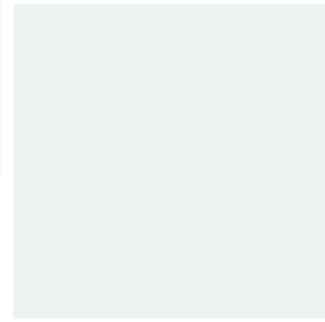
TIGER WOOD

WOOD GRAIN BASECOAT **COLOR TABLE**

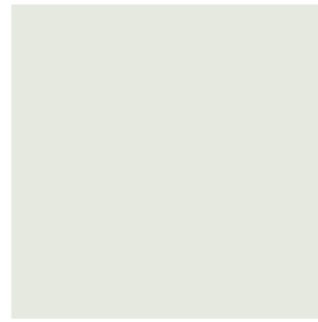
Color	Base Coat Code & Color	Sublimated Name	Lead Time Business Days	Stocked Color	Light Value Reflection	Repeat Pattern	
						Imperial	Metric
	GZ310A. Charcoal	Black Ash (BK1)	62 Days	No	8	2'10"	880mm
		Charcoal Ash (CH1)	62 Days	No	8	3'11-1/4"	1200mm
	GZ311A. Chocolate	Black Walnut (BK2)	62 Days	No	9	2'10"	880mm
		Wenge (WE1)	62 Days	No	9	2'10"	880mm
	GZ306A. Dark Beige	Bush Cherry (BC1)	20 Days	Yes	17	2'1"	640mm
		Eastern Mahogany (EM1)	20 Days	Yes	17	2'10"	880mm
		Kwila (KW1)	20 Days	Yes	17	3'2"	980mm
		Savannah Oak (SO1)	20 Days	Yes	17	2'10"	880mm
		Teak Brown (TB1)	20 Days	Yes	17	2'10"	880mm
		Western Red Cedar (WR1)	20 Days	Yes	17	2'10"	880mm

Solid Color Offerings

- Custom color matching available
- Subject to minimum order quantities
- Extended lead times may apply



WHITE



MIST



SANDSTONE



ADMIRAL BLUE



CARBON



SMOKE

Standard Solid Colors



VAPOR GREY



MIDNIGHT BLACK



CLAY



STERLING



SLATE GRAY

Knotwood Architectural Systems & Equinox Louvered Roof Color Match Policy



Knotwood Architectural Systems and Equinox Louvered Roof offer custom color matching services for extruded profiles. Colors are developed and produced by our primary powder coat supplier, Akzo Nobel. Finishes are to be applied by a certified powder manufacturer. **The following steps denote the requirements to produce Knotwood custom powder coat finishes:**

1. Customer to mail physical, control color sample to the Product Development Team at headquarters:

Steve Taliaferro
Omnimax Intl.
30 Technology Pkwy S, Ste. 400
Peachtree Corners, GA 30092

2. Product Development to submit color match with control sample request to Akzo to develop finish(es) within 2 – 4 Weeks

3. Akzo returns control sample and developed match(es) to Product Development for production approval.

4. Product Development submits Akzo color match sample(s) to customer for production approval. Written confirmation required.

5. Color(s) and part(s) are then setup, priced & activated for ordering.

6. Customer must include an additional 5% waste factor on quantities for project incidentals.

7. Customer must take ownership of all One-Off materials produced at dispatch/delivery time.*

*Customers commitment required for delivery of full production run. Steps have been implemented to reduce excess & obsolete inventory, spatial occupancy, and to ensure the customer gets the most materials for their dollar.

Overall Timeline: 120 (+/-) days to produce and ship. Roughly a 4 - 5 month process.

Contact David Carmack (dcarmack@omnimax.com) for questions regarding **Knotwood**.

Contact Kevin Cook (kcCook@omnimax.com) for questions regarding **Equinox**.

Knotwood Architectural Systems & Equinox Louvered Roof Die Development Policy



Customers may request Knotwood Architectural Systems and Equinox Louvered Roof profiles specific to a particular job or design. **OmniMax Product Development can assist with products that may or may not be included in the OmniMax PD pipeline.**

1. Die quote request must be submitted to our extruder(s) [ABC/ALCAS/TOWER] along with a drawing(s) of the profile to be created.

2. Customer pays die fee +35% service mark up.

3. Omnimax Intl. will own the die and add to profile archive for future use.

4. One-Off custom dies will require a MOQ for production. Quantities determined and mandated by our extruder(s) at time of quote.

5. Customer must include an additional 5% waste factor on quantities for project incidentals.

6. Supplier(s) will trial the die(s) and submit first production articles to OmniMax for inspection and extrusion approval.

7. Once approved, customer will submit PO to CC for One-Off order.

8. Customer takes ownership of all One-Off materials produced at dispatch/delivery time.*

*Customers commitment required for delivery of full production run. Steps have been implemented to reduce excess & obsolete inventory, spatial occupancy, and to ensure the customer gets the most materials for their dollar. Extended lead times apply. Design and die cutting can add +1 month to overall procurement process (not including custom color development if needed). The lead times are determined one a successfully performing die is created.

Contact David Carmack (dcarmack@omnimax.com) for questions regarding **Knotwood**.

Contact Kevin Cook (kcCook@omnimax.com) for questions regarding **Equinox**.

SUBLIMATION VARIATION NOTICE

Due to the nature of the sublimation process, colour variation and some blemishes will occur. This unique product is designed to mimic real wood, so there will be colour and image inconsistencies. Not every piece is designed to be exactly the same. Please refer to our websites www.knotwood.com.au/colours or www.knotwood.com/colors for examples of images.

CUSTOMER AGREEMENT

By placing this order and/or paying for these items, I agree that I have checked that all colours/profiles and quantities are correct. I understand this order will be manufactured to the details on this order and once accepted changes cannot be made.

Please note that as soon as you have cut or made any changes to the Knotwood item/s that you have received, you formally take ownership and responsibility for the item/s. No refund or exchange will be offered if any changes to the length or condition of the item/s have been made. There will be no refunds for manufactured products or kit items.

Please do not finalise starting dates for installation until after goods have been delivered and checked.

All credit claims must be in writing within 7 days of receipt of goods or no claim will be accepted.

Sublimation Variation

ANGLE INTERNAL:



FILM STREAM LINE:



PATTERN VARIATION:



ACCEPTABLE EXAMPLES OF VARIATIONS IN WESTERN RED CEDAR



BOTTOM OF DECKING:



HANGING HOLE:



TAPED ENDS:



FILM CREASE:



IMAGE DISTORTION:



VACUUMED FILM ENDS:



K

IMPORTANT PRODUCT INFORMATION

Please inspect all pieces prior to installation. By design, Knotwood products feature color variations. Choose boards from multiple bundles and mix the color in order to create a more natural appearance and mimic the beauty and variation of natural wood.

See full variation notice for more details.

KNOTWOOD



Knotwood SYSTEMS

Durable powder coating, available in wood grain and solid powder coat colors.
All systems created for simple installation, minimal maintenance and superior aesthetics.



Awnings



Pergolas



Fencing



Gates



Screens



Cladding



Balustrades



Decking



Soffits



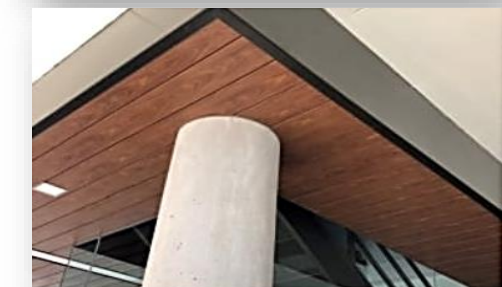
Battens

And much more.....

Benefits of Knotwood **CLADDING**

Some of the benefits confirmed by various installers of Knotwood Cladding are:

- Installation from the top of the wall to the bottom due to the unique extrusion design
- Easy ground level damage replacement.
- Any direction of Installation is possible; horizontal, vertical, angled.
- Single person Installation
- Adjustable gap reveal for desired look and resistance to water penetration
- Two part trims for ease of install
- Installation up to 36" on center. (less fastening points required; less labor time)
- Dade county / Florida approvals
- The cladding extrusion can be used as aluminum decking installations, 16" on center support
- 8" cladding board is available 2019 (20% Cheaper install time)
- Our profile is a thicker extrusion in the industry to withstand hail and minor damage
- Our cladding clips, which allow for expansion and contraction, come with the option of have a 3/8" PVC spacer glued to them which can eliminate strapping required on the building.
- Knotwood is available in other systems that can match the same color of the siding/cladding – Battens, fencing, gate, pergolas, privacy screens, infills, etc.
- Aluminum is Non-combustible and recyclable. More and more regions as well as architects ask for a fire resistant product.



STANDARD CLADDING



OUTSIDE CORNER



INSIDE CORNER



FLASHING BASE

CLADDING TRIMS



TOP JOINER

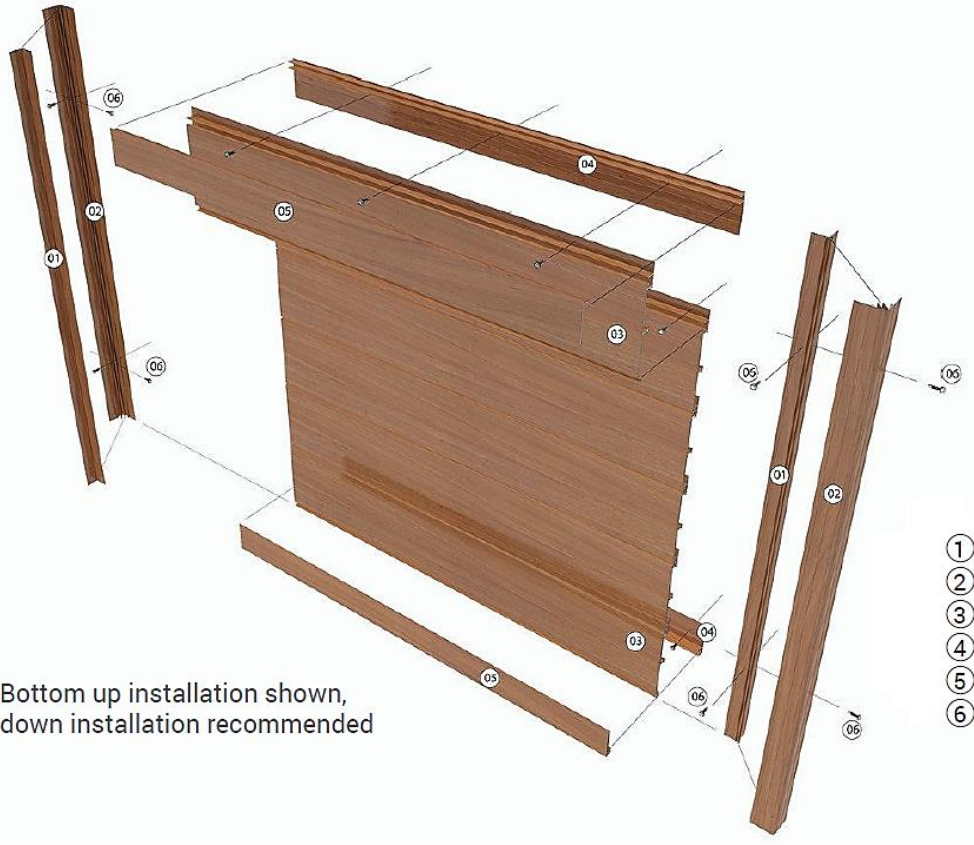


BASE JOINER



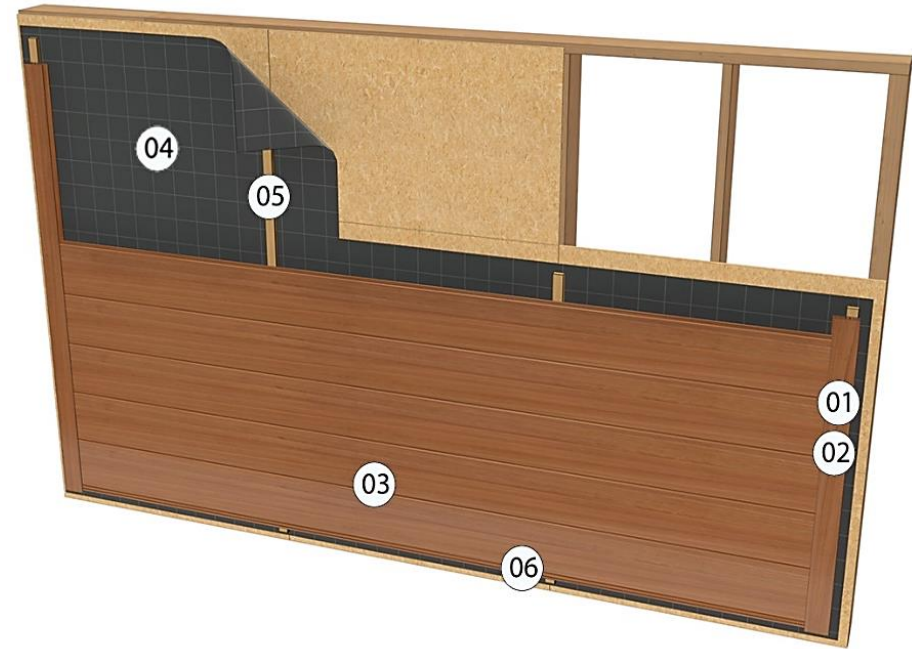
TOP CLIP

CLADDING INSTALLATION



* Bottom up installation shown,
top-down installation recommended

- ① KECIECLM
- ② KECIECF
- ③ KED150
- ④ KECFBF
- ⑤ KECFTTLM
- ⑥ SCREWS



- ① KWMCTJ
- ② KWMCBJ
- ③ KWD150
- ④ Rain Screen
per specifications
- ⑤ Batts
900mm (36") Center
per specifications
- ⑥ KWDST



PRODUCT COMPARISON

	DIZAL® (Aluminum)	KNOTWOOD™ (Aluminum)
Material	Aluminum	Marine Grade Aluminum Alloy
Colors	32 Woodgrain Colors + Textures No Solid Colors Advertised	38 Advertised Woodgrain 12 Standard / 48 Spec Order Solid Colors
Finish	Digital Inkjet Printing + Barrier Coating	Base Powder Coating + Woodgrain Sublimation process for long- lasting durability and aesthetics
Plank Versatility	Flat & V-Groove Plank ordered separately – Multiple SKU's	Adjustable Interlocking channel provides reveal or no reveal installation – 1 SKU
Dimensions	16' – Standard cladding length 12' – Trim length	18' 6" - Standard cladding & trim length
Installation	Bottom Up Install Only	Top Down OR Bottom Up Install
Installation Process	Direct to wall with screws (limited ability to manage thermal expansion)	Specially designed "Clip" (allows thermal expansion without warping or buckling)
Thermal Expansion	Fasten screws into fixed slot 16" OC, controlled tightening to leave 1/16" gap to allow for expansion/contraction (difficult to monitor, labor intensive, & no drainage)	Fasten with screw 32" OC into custom Knotwood™ clips provided - clip allows for thermal expansion/contraction & drainage
Systems	Cladding, Battens	Cladding, Decking, Fencing, Railing, Screening, Battens, Gates, Enclosures,
Warranty	Limited Lifetime – Extrusions 15 years – Color & Finish (Not Warranted in coastal/salt water environments)	Limited Lifetime – Extrusions 15 years - Sublimated Woodgrain Finish 20 years – Solid Colors (Warranted in coastal/salt water environments)

Some of the benefits confirmed by various installers of Knotwood™ Cladding...

- Lower cost materials and installation labor
- Adjustable gap reveal for desired look and resistance to water penetration
- Single person installation
- Easy ground level damage replacement
- Multiple trims for ease of install
- Knotwood™ is available in other systems that can match color of cladding

DIZAL®	KNOTWOOD™
<p>[2] SKU (Flat & Groove) • Order Separately •</p>	<p>[1] SKU Adjustable Interlocking Channel</p>
<p>Tongue & Groove • Bottom Up Install Only •</p> <p>Bottom up - difficult to repair/replace any pedestrian damage</p>	<p>Interlocking • Top Down or Bottom Up Install •</p>
<p>Direct fastening reduces ability for any moisture /condensation to drain from behind</p> <p>Slower install process & difficult to control screw tension - if too tight cladding can not expand & can buckle.</p>	<p>Fasten using specially designed clip system provided</p> <p>Clip allows for thermal expansion movement & keeps cladding off the wall allowing drainage if needed</p>

PRODUCT COMPARISON

	LONGBOARD® (Aluminum)	KNOTWOOD™ (Aluminum)
Material	Marine Grade Aluminum Alloy	Marine Grade Aluminum Alloy
Colors	18 Exterior Wood Grain 14 Solid Colors	32 Advertised Wood Grain 60 Advertised Solid Colors
Installation	Bottom Up Install • Tongue and Groove Cladding •	Top Down OR Bottom Up Install • Interlocking Cladding •
Labor	Minimum 2 laborers – (not interlocking nor self supporting) • Bottom Up install •	Minimum 1 laborer (interlocking and self supporting) • Top Down install •
Repair / Replacement	Top down removal to reach damage. Typically requires reinstalling more cladding.	Bottom up removal to reach damage. Replace only damaged cladding.
Trims	Cladding – limited trim options	Cladding – multiple trim options
Dimensions	12' and 24' length	Standard 18' 6" length
Warranty	• Aluminum Material – 50 yrs • Woodgrain Finish – 15 yrs (<u>excludes</u> close proximity to salt water)	• Aluminum Material – Limited Lifetime • Woodgrain Finish – 15 yrs (<u>includes</u> close proximity to salt water)

Some of the benefits confirmed by various installers of Knotwood™ Cladding...

- Lower cost materials and installation labor
- Adjustable gap reveal for desired look and resistance to water penetration
- Single person installation
- Easy ground level damage replacement
- Multiple trims for ease of install
- Knotwood™ is available in other systems that can match color of cladding

Longboard®

2 - SKU
(No channel & Channel)
• Order Separately •



TONGUE & GROOVE
(Not interlocking nor self supporting)



Knotwood™

1 - SKU
Adjustable
Interlocking
Channel



INTERLOCKING
(Self supporting)



PRODUCT COMPARISON

	TRESPA Pura NFC® CLADDING (Composite)	KNOTWOOD™ CLADDING (Aluminum)
Material	70% Wood Fibers + Resin	Marine Grade Aluminum Alloy
Colors	8 Woodgrain Colors 8 Solid Colors	32 Advertised Woodgrain 60 Advertised Solid Colors
Warranty	10 years - product performance & color stability only	Limited Lifetime - extrusions 15 years - sublimated woodgrain finish 20 years – solid color finish
Design	Lap Siding & Flush Siding – exposed butt joints showing a 5/16” gap. A 1/4” reveal between slats on flush siding.	Interlocking Cladding with adjustable “reveal / no reveal” option. No exposed butt joints.
Installation	<ul style="list-style-type: none"> • Bottom Up installation only (not interlocking & self supporting) • Requires 24”max OC aluminum or wood furring (increases cost) • Attachment at 24”OC & must apply 1 nail in center of each slat • Slow & detailed installation 	<ul style="list-style-type: none"> • Top Down or Bottom Up installation (interlocking & self supporting) • No mandatory furring required (lower material cost & faster installation) <ul style="list-style-type: none"> • Attachment at 32”OC (typically every other stud) • Fast & efficient installation
Dimensions	7” W x 10’ L	6” W x 18’ 6” Standard length
Trims	One-piece J-Channels & Corners	Two-piece snap together trims for easy install/replacement & concealed fasteners
Class A Fire Rating	Approved when combined with other Class A rated wall materials	Approved

Some of the benefits confirmed by various installers of Knotwood™ Cladding...

- Lower cost materials and installation labor
- Adjustable gap reveal for desired look and resistance to water penetration
- Single person installation
- Easy ground level damage replacement
- Multiple trims for ease of install
- Knotwood™ is available in other systems that can match color of cladding

TRESPA Pura NFC®

Exposed Butt Joints & Mandatory Reveal



KNOTWOOD™

Optional - Butt Joint or Joiner Trim



Interlocking Cladding - Optional Reveal or No Reveal



STANDARD DECKING



STARTER PIECE



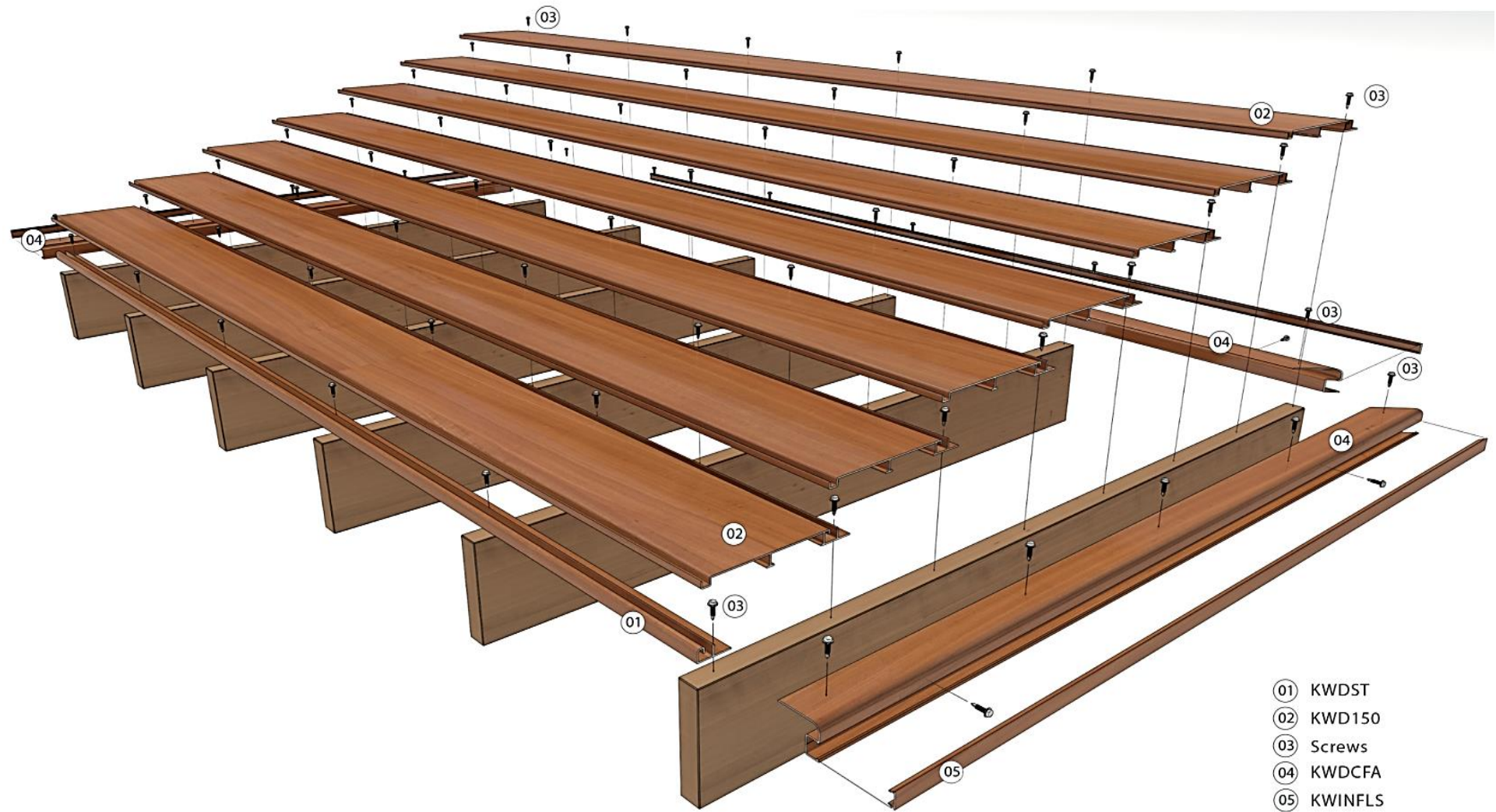
INTERLOCKING DECKING BOARD

DECKING PARTS



CONCEALED FIXING ANGLE

DECKING INSTALLATION





KNOTWOOD®

ARCHITECTURAL SYSTEMS



STANDARD FENCING & PRIVACY SCREENS



ONE WAY POST / RAIL



1-1/8" U CHANNEL



SLATS 1 1/2" , 2 1/2" , 4" , & 6"



TWO WAY POST



CORNER POST

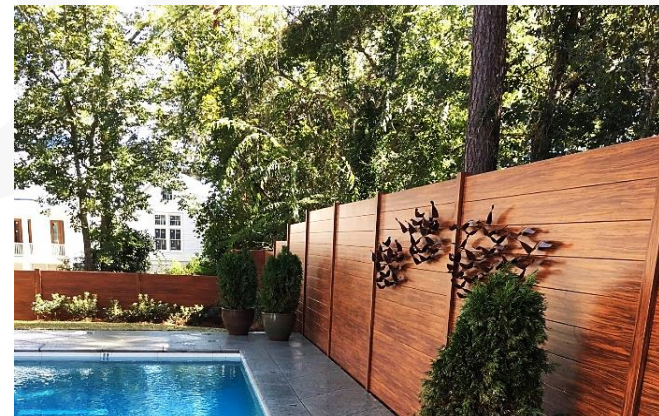


INFILL/SPACER

FENCING / SCREENING PARTS

STANDARD FENCE INSTALLATION





KNOTWOOD®

ARCHITECTURAL SYSTEMS



STANDARD SLIDING & PEDESTRIAN GATES



GATE PARTS



LARGE GATE FRAME



SLATS 1 ½ , 2 ½ , 4 , 6"



SMALL GATE FRAME



POST 2 ½ " & 4"

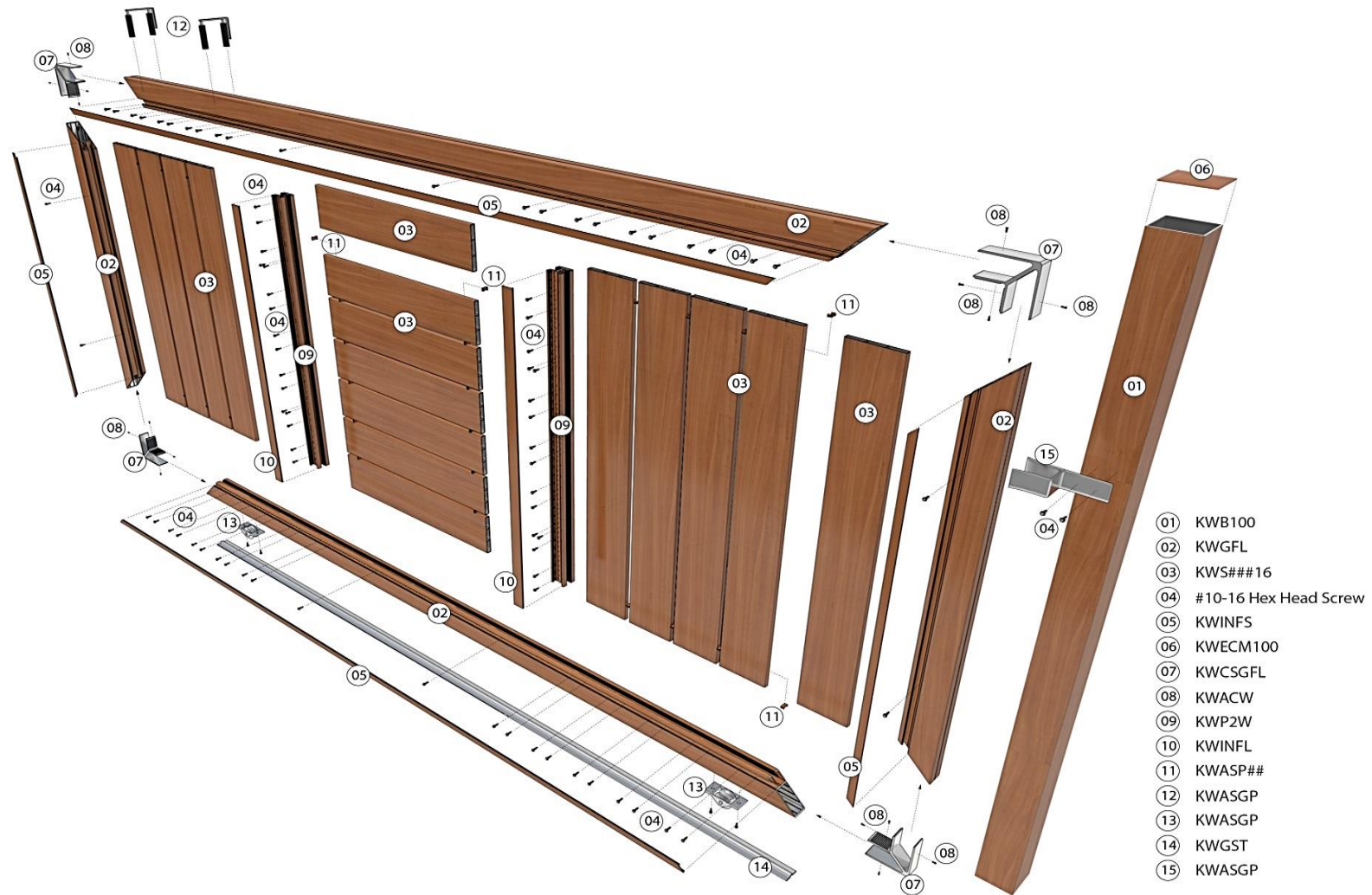


CORNER STAKE



INFILL/SPACER

STANDARD GATE INSTALLATION



GATE HARDWARE



SLIDING GATE TRACK



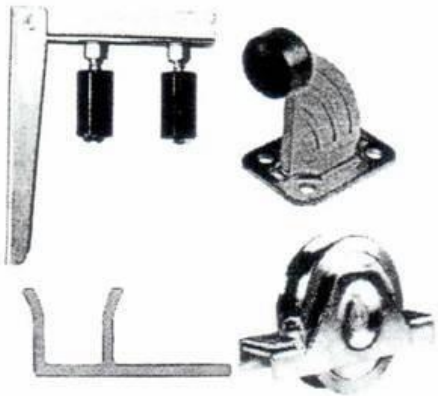
VIPER GRAVITY LATCH
(TWO-WAY INDEPENDENT)



ADJUSTABLE SELF
CLOSING HINGE



HOT-DIP GALVANIZED
OR EPOXY COATED
SELF-TAPPING
FASTENERS



SLIDING GATE PACK



KNOTWOOD[®]

ARCHITECTURAL SYSTEMS



STANDARD BATTENS



2"X 2" PART B



2"X 4" PART B



2"X 6" PART B



2"X 8" PART B

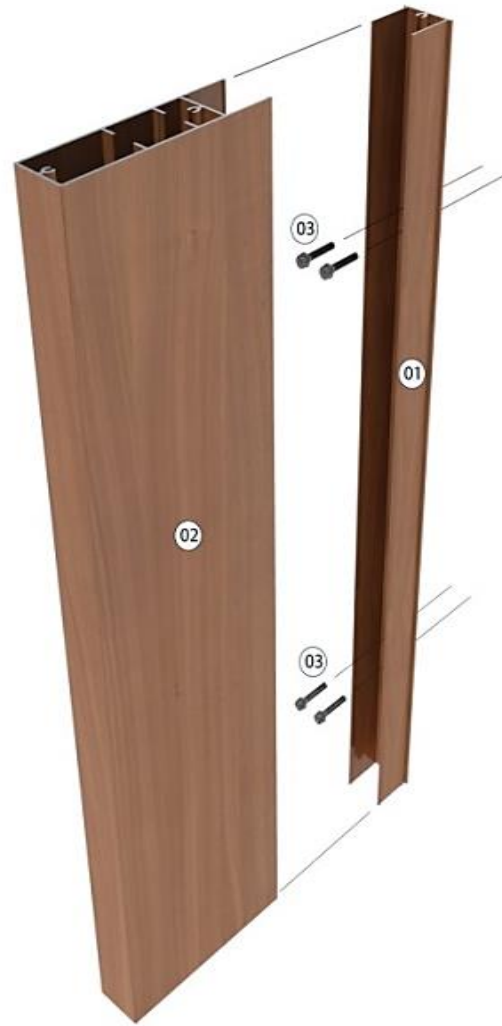


2" PART A

BATTEN PARTS



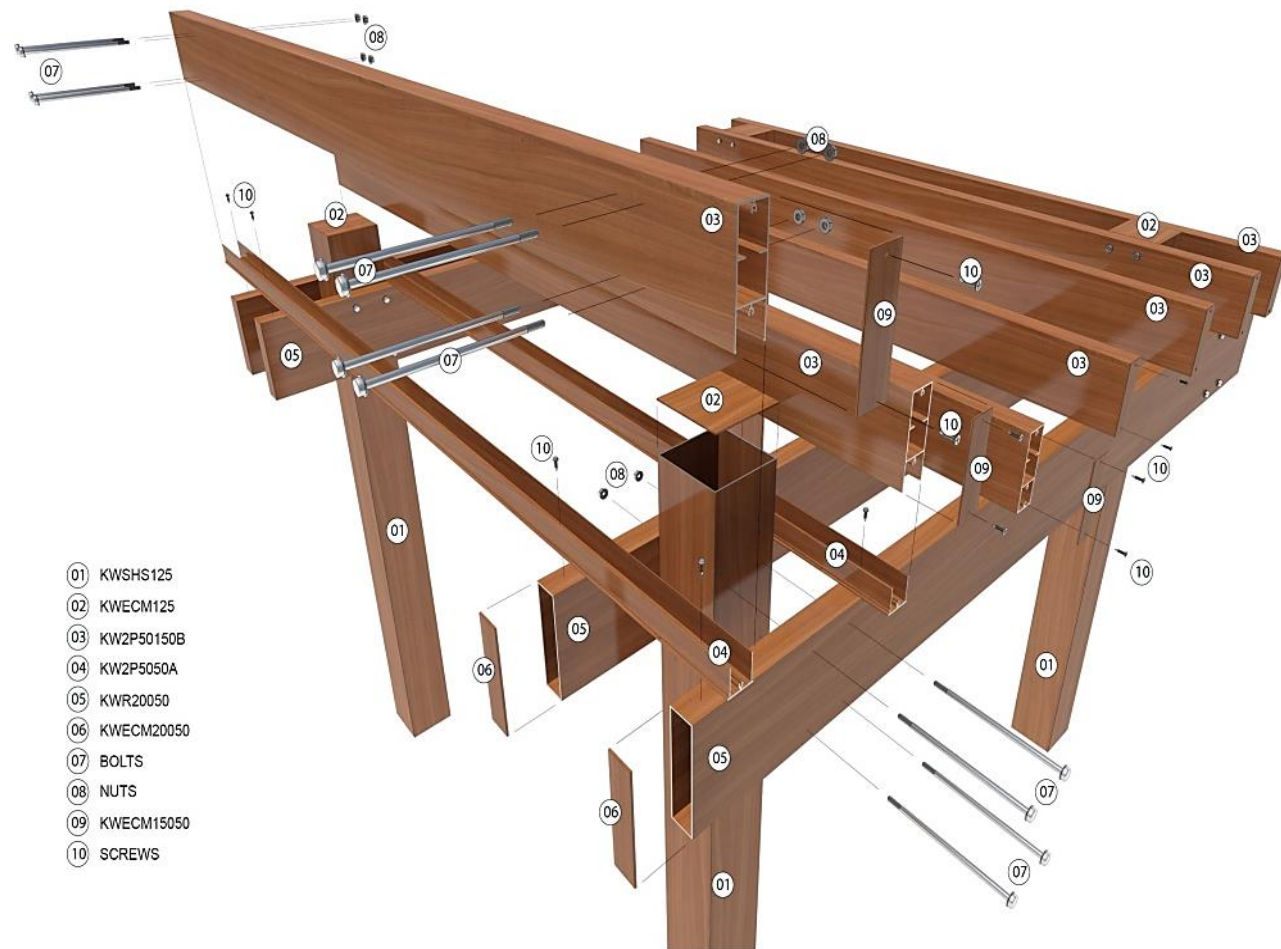
TWO-PART BATTEN INSTALLATION



- 01 KWB50BPA
- 02 KWB50200PB
- 03 Screws



STANDARD TRELLIS / PERGOLA



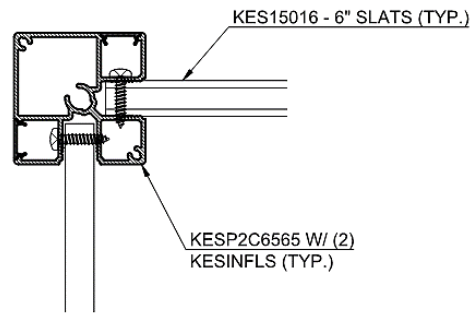
KNOTWOOD[®]
ARCHITECTURAL SYSTEMS



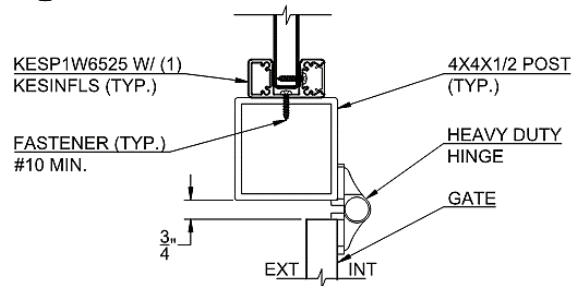


ENGINEERING

- Multiple variables must be accounted for across all Knotwood applications.
- Not all applications are constructed using the same part composition.
- Knotwood has pre-engineered & calculated proprietary systems.
- The Knotwood Tech team facilitates engineering consultation with a 3rd party outfit.



7 TYPICAL CORNER POST
SCALE: 6" = 1'-0"



9 TYPICAL TWO WAY POST
SCALE: 3" = 1'-0"

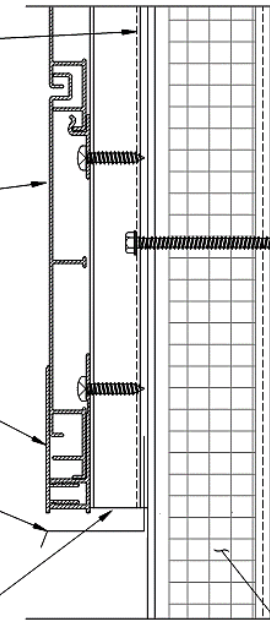
NEW VAPOR PERMEABLE
WEATHER RESISTIVE BARRIER
DEPENDENT ON EXISTING
EIFS/WRB TYPE AND CONDITION
(OR LOCALIZED SEALANT AT EACH
FASTENER)

KNOTWOOD CLADDING
SIDING (KEC150 TYP)

KNOTWOOD TRIM PIECES
(KECFTTLM/KECFBF)

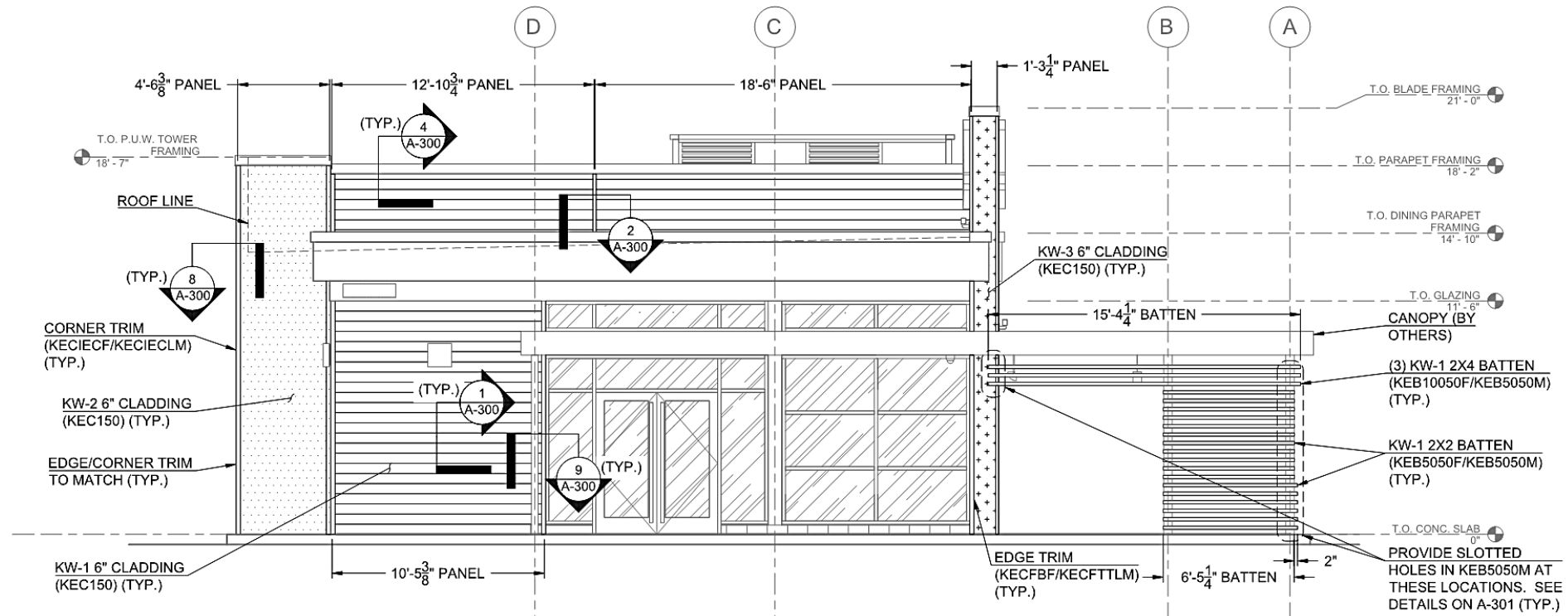
FLASHING

RECOMMENDED
VENTED HAT CHANNEL.
VERTICAL AND ALIGNED WITH
EX STUD FRAMING.
GAUGE AND FASTENING
ENGINEERED FOR PROJECT
REQUIREMENTS



SHOP DRAWINGS

- Shop drawing services are available from a 3rd party engineering firm and are not available in house.
- Most proprietary Knotwood applications have been pre-engineered with existing generic shops available to the general public by request.
- The Knotwood Tech team is available for architectural consult to assist with building details & profile and/or system recommendations.



2 FRONT ELEVATION VIEW
SCALE: 1/4" = 1'-0"

PART NUMBER RATIONALE

KEC150-5650_YZ308A

PART PREFIX

'K'notwood - Brand
'E'xtrusion - Part Type
'C'ladding - Profile

PART SUFFIX

Profile Metric
'150' - 150mm / 6"

PRODUCTION METRIC

Production Length
'5650' - 5650mm / 18'6"

COLOR CODE

Component Base Coat
'YZ308A' - Snow Gum Yellow

*** base & solid colors 6 digit alphanumeric ***

KEB10050F-5650_MB

PART PREFIX

'K'notwood - Brand
'E'xtrusion - Part Type
'B'atten - Profile

PART SUFFIX

Profile Metric
'10050F' - 100mm x 50mm / 4" x 2"

*** F = Female **
** M = Male ***

PRODUCTION METRIC

Production Length
'5650' - 5650mm / 18'6"

COLOR CODE

Finish Color Code
'MB' - Midnight Black Solid Finish

KAEC15016-R_LO1

PART PREFIX

'K'notwood - Brand
'A'ccessory - Part Type
'EC' End Cap - Profile

PART SUFFIX

Part Metric
'15016' - 150mm x 16mm (6" x 5/8")

ACCESSORY TYPE

'R'outed End Cap

*** some accessory color codes N/A ***

COLOR CODE

Finish Color Code
'LO1' - Light Oak Wood Grain

*** base & solid colors 6 digit alphanumeric ***

WARRANTY

Limited Lifetime Warranty

- Knotwood warrants its aluminum against any structural defects such as cracking, warping or insect damage.

15 Year Warranty On Woodgrain Finishes

- Finish will not fade more than 15% for a period of 15 years.

20 Year Warranty On Solid Finishes

- Finish will not fade more than 15% for a period of 20 years.

REPAIRS

- If Knotwood gets a minor scratch we recommend Mohawk Brush Tip Graining Marker paint pens for touch up. These pens match existing finishes. Please see the Mohawk Brush Tip Graining Marker guide.
- For larger damaged areas - singular slats or boards can be replaced. Specific diagrams can be supplied depending on the system being affected. Cladding boards are specifically designed for a bottom/up replacement orientation to allow for easy replacement in high traffic areas (competition does not account for this).

MOHAWK TOUCH-UP PENS

Knotwood	Mohawk Brush Tip Graining Marker	
Ash	Ash Tone	M265-2012
Aspen	Ash Tone	M265-2012
Atlantic Cedar	Burnt Sienna	M265-2010
Australian Cedar	Burnt Umber	M265-2009
Beachwood	Ash Tone	M265-2012
Black Ash	Deep Brown Mahogany	M265-2011
Black Walnut	Van Dyke Brown	M265-2007
Blackbutt	Nutmeg Tone	M265-2022
Bush Cherry	Nutmeg Tone	M265-2022
Chestnut	Natural Light Oak Tone	M265-2017
Driftwood	Warm Brown Walnut Tone	M265-2014
Eastern Mahogany	Medium Dark Oak Tone	M265-2020
Hickory	Warm Brown Walnut Tone	M265-2014
Iroko	Golden Oak Tone	M265-2015
Iron Bark	Burnt Sienna	M265-2010
Jarrah	Deep Cordovan	M265-2016
Knotty Pine	Light Golden Oak Tone	M265-2021
Koa	Nutmeg Tone	M265-2022
Kwila	Natural Light Oak Tone	M265-2017
Light Oak	Antique Maple Tone	M265-2023
Maple	Maple Glaze Tone	M265-2019
Merbau	Medium Dark Oak Tone	M265-2020
Red Gum	Burnt Sienna	M265-2010
Rose Mahogany	Deep Cordovan	M265-2016
Spotted Gum	Light Oak	M265-2006
Sydney Blue Gum	Deep Cordovan	M265-2016
Tassie Oak	Golden Oak Tone	M265-2015
Teak Brown	Van Dyke Brown	M265-2007
Tiger Wood	Burnt Umber	M265-2009
Wenge	Dark Brown Mahogany	M265-2008
Western Red Cedar	Burnt Sienna	M265-2010
Zebrano	Warm Brown Walnut Tone	M265-2014

Mohawk Brush Tip Graining Marker		Knotwood Woodgrain
M265-2006	Light Oak	Spotted Gum
M265-2007	Van Dyke Brown	Black Walnut, Teak Brown
M265-2008	Dark Brown Mahogany	Wenge
M265-2009	Burnt Umber	Australian Cedar, Tiger Wood
M265-2010	Burnt Sienna	Atlantic Cedar, Iron Bark, Red Gum, Western Red Cedar
M265-2011	Deep Brown Mahogany	Black Ash
M265-2012	Ash Tone	Ash, Aspen, Beachwood
M265-2013	Honey Maple Tone	
M265-2014	Warm Brown Walnut Tone	Driftwood, Hickory, Zebrano
M265-2015	Golden Oak Tone	Iroko, Tassie Oak
M265-2016	Deep Cordovan	Jarrah, Rose Mahogany, Sydney Blue Gum
M265-2017	Natural Light Oak Tone	Chestnut, Kwila
M265-2018	Warm Oak Tone	
M265-2019	Maple Glaze Tone	Maple
M265-2020	Medium Dark Oak Tone	Eastern Mahogany, Merbau
M265-2021	Light Golden Oak Tone	Knotty Pine
M265-2022	Nutmeg Tone	Blackbutt, Bush Cherry, Koa
M265-2023	Antique Maple Tone	Light Oak

KNOTWOOD®
ARCHITECTURAL SYSTEMS



DEALER SALES ENABLEMENT

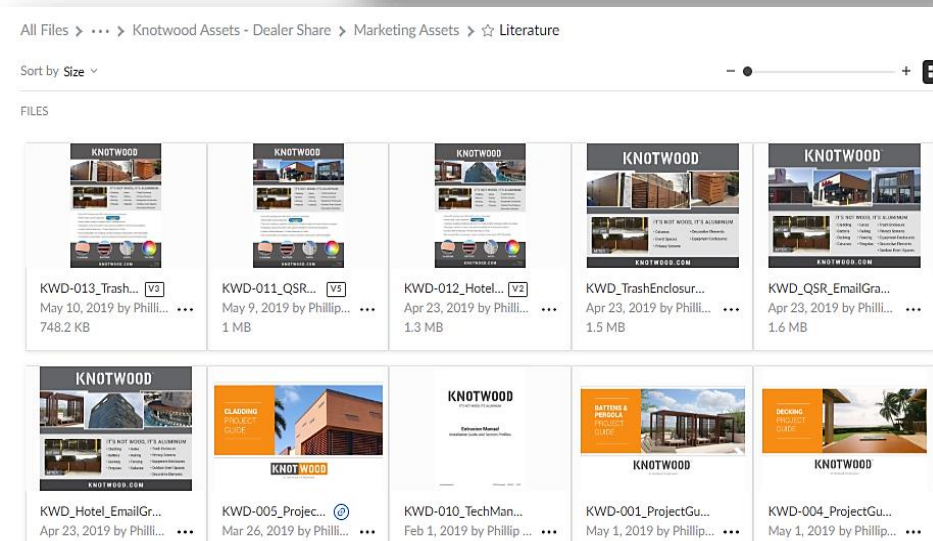


FEATURED PRODUCTS

Knotwood Enclosures
Equipment and trash protection with the appearance of wood but durable as aluminum.
[Learn more >](#)

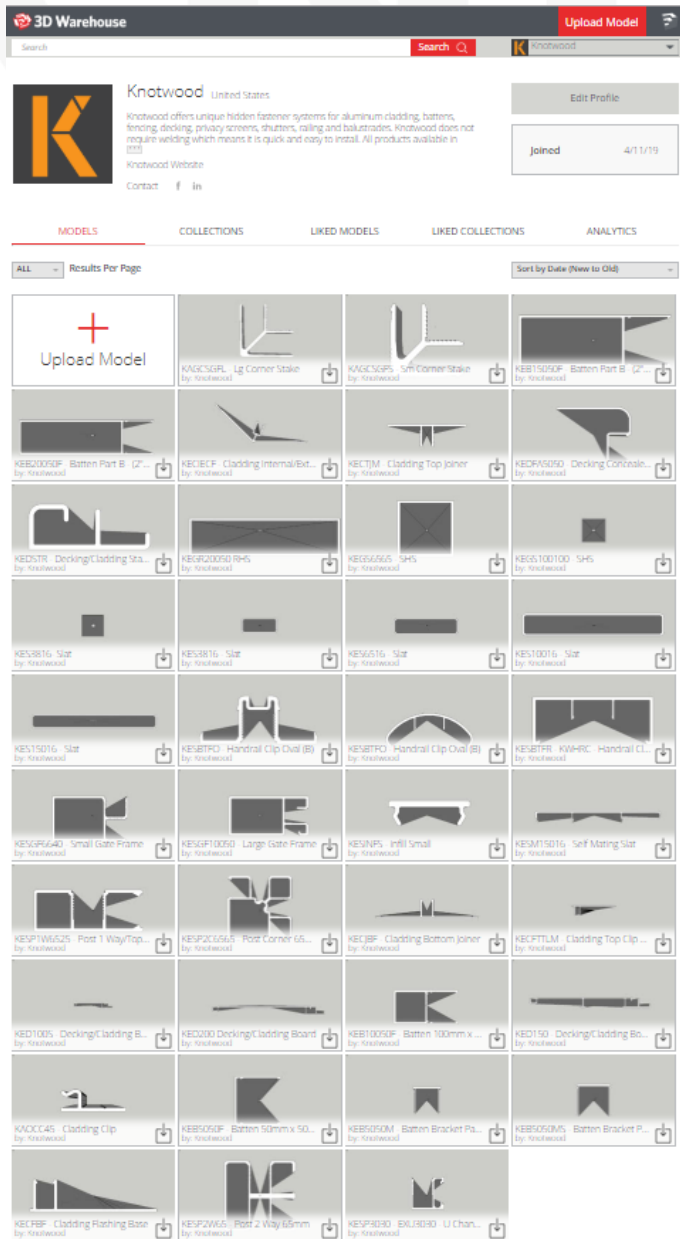
FEATURED PRODUCTS

Knotwood Enclosures
Equipment and trash protection with the appearance of wood but durable as aluminum.
[Discover it here >](#)



- Knotwood Product Experts - product knowledge training excellence knotwoodtech@omnimax.com
- Direct Sales Team - new dealer sales training & sales growth support
- Customer Care Team for order support
- Architectural Sales Team to drive specifications
- Dealer Program Incentives
- Social & Google Ad Campaigns to drive product awareness & leads
- SketchUp 3D Warehouse - Live 6/17/19
- CAD, Revit Files and Product Specification Writing - In progress
- New Products & Product Enhancements
- Vendor & Agency Partnerships for Exclusive Dealer Service Pricing
- National Event Production for Brand & Product Awareness
- 100+ Tools & Resources Available in shared resource folder
- Website Updates



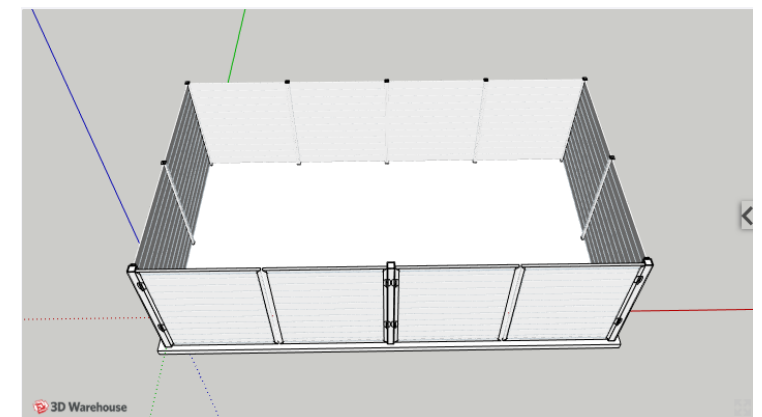
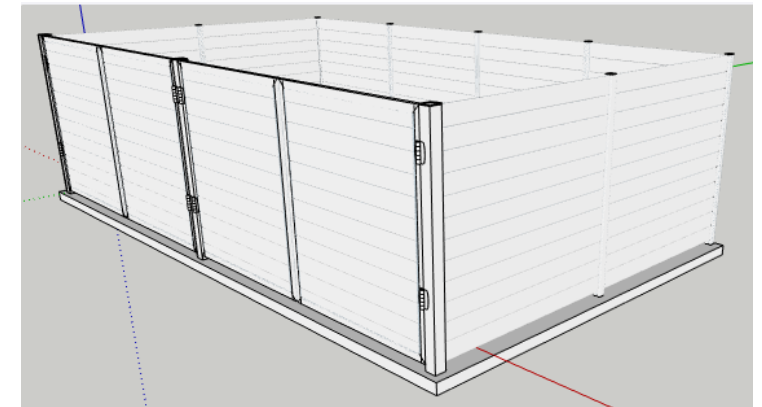


SKETCHUP 3D WAREHOUSE

<https://3dwarehouse.sketchup.com/by/knotwood>

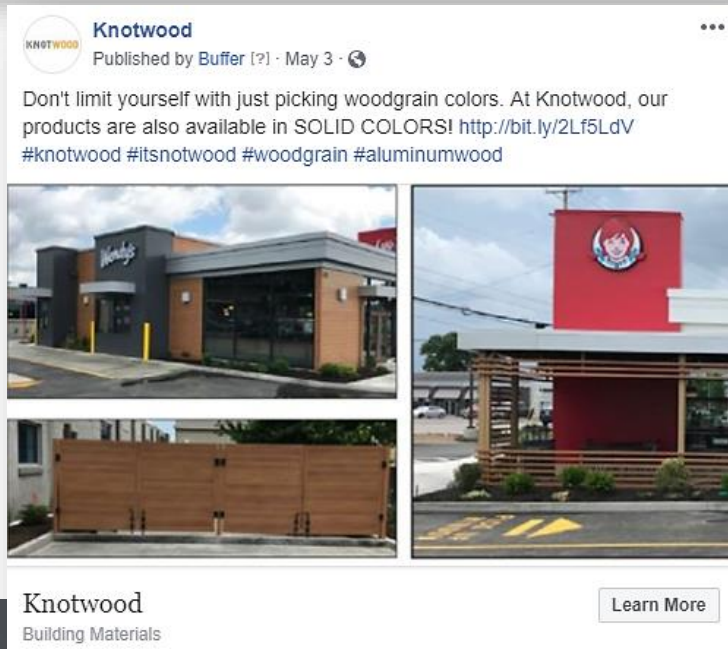
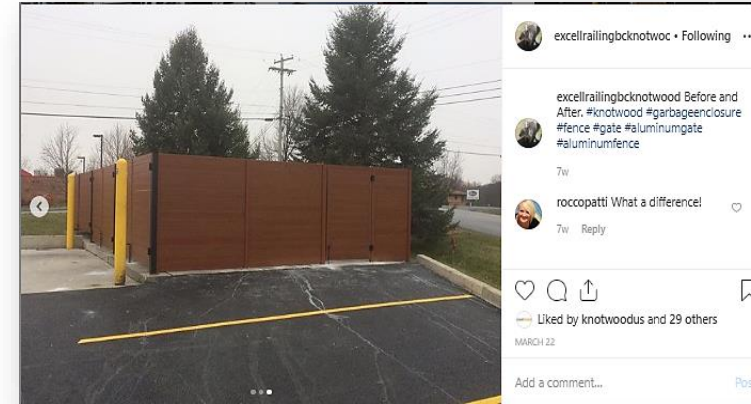
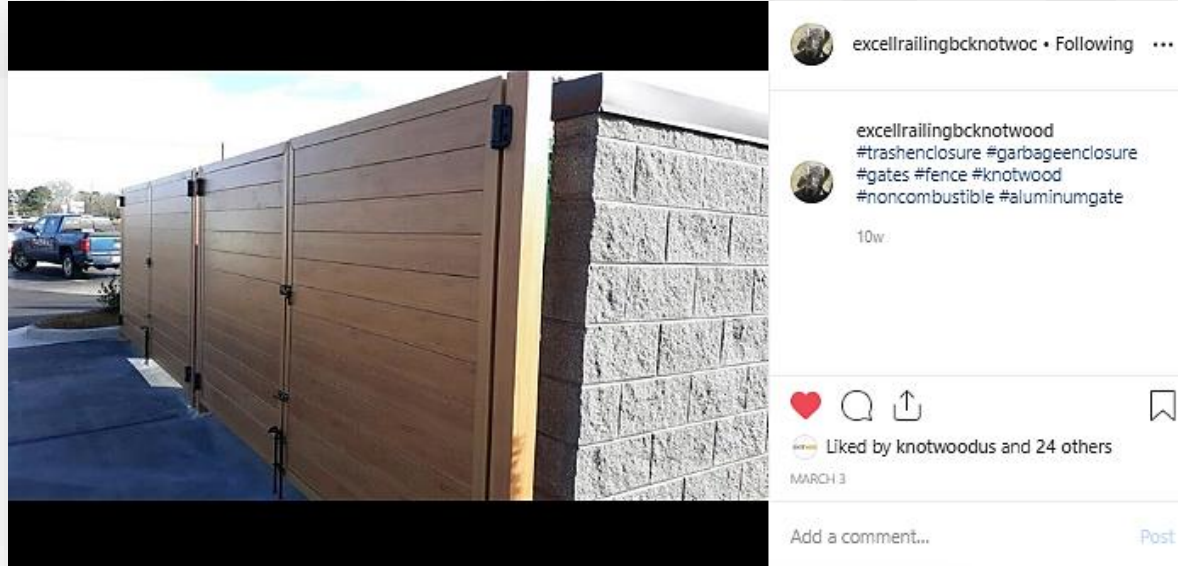
KNOTWOOD® ARCHITECTURAL SYSTEMS

- 2 Dumpster Enclosure Sample Build (12.5' x 21.5')
- All Knotwood Components



PHOTOS & SOCIAL MEDIA POSTS

- www.facebook.com/knotwoodus
- www.instagram.com/knotwoodus
- www.linkedin.com/company/knotwoodus/
- www.pinterest.com/knotwoodus



INSTALLATION VIDEOS

CLADDING

[Knotwood Cladding Joiner Install](#)

[Knotwood Cladding Door Flashing Install](#)

[Knotwood Cladding Inside Corner Install](#)

[Knotwood Cladding Outside Corner Install](#)

[Knotwood Cladding Joint Lock Install](#)

[Knotwood Cladding Optional Inside Corner Install](#)

FENCE & GATES

[Vertical Fence Install](#)

[Horizontal Fence Install](#)

[Gate Install](#)

DECKING

[Interlocking Decking Install](#)

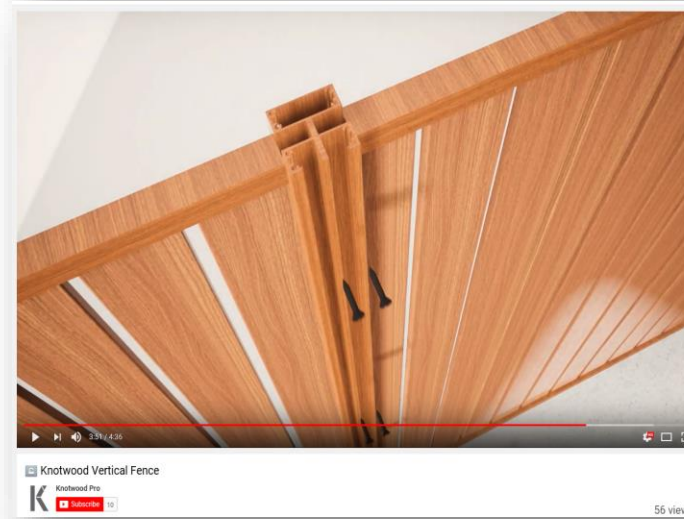
[Decking Joiner Install](#)

[Self-Mating Decking Install](#)

RAILINGS

[Façade Railing Install](#)

[Surface Railing Install](#)



ORDERING & DELIVERY



- Submit Orders/Quotes to KnotwoodOrder@omnimax.com using the Quote/Order Request Form found in the Microsoft Teams Folder labeled 'Knotwood Sales Tools'. Items received after 3pm ET will be processed the following business day. Once the order is booked, the customer will receive an SOA with the scheduled ship date.
- Orders must include part numbers, color, quantities, pricing, purchase order #, project name, ship to address, and shipping contact information. If a Quote was previously provided for the order, please reference the Quote # in your email.
- Quote Requests should include project name and estimated order date. Freight Quotes are valid for 48 hours.
- Lead time for standard parts/colors is < 20 business days. Non-standard colors have a lead time of 62+/- business days. Custom/Solid color lead times are open ended.
- Freight options are Flatbed, LTL, or UPS (if items are cut in ½). All LTL shipments will include a \$155 pallet/packaging fee.
- Projects over \$35K require a project information sheet (MSPI Form). Customer Care will email the form to the customer upon receipt of the order, which will need to be completed prior to shipping (Link in Contact References).
- Customer Care PH: 855-566-8966



REFERENCES & CONTACTS



General Info:

www.Knotwood.com

PH: 855-566-8966

Email: knotwoodinfo@omnimax.com

Project Registration:

<https://www.tfaforms.com/4836455>

Project Information (MSPI Form):

<https://omnimaxforms.secure.force.com/projectform/>

Customer Care:

PH: 855-566-8966

Email: knotwoodorder@omnimax.com

Patricia Webb, Customer Care Manager

Sample Requests:

Email: knotwoodsamples@omnimax.com

Request Form: <https://www.tfaforms.com/4764094>

Product Support:

Email: knotwoodtech@omnimax.com

David Carmack, Product Technical Manager:

PH: 808-346-2188 kshivvers@omnimax.com

Steven Williams, Sr. Product Training Manager:

PH: 678-472-5632 swilliams@omnimax.com



Knotwood™ Trivia



- 1. What is the standard production length of all Knotwood™ extrusions?**
- 2. How many butt-joint seams are allowed between any two trim points in Knotwood™ cladding or soffit systems?**
- 3. When should you fully snap and mate the trims during cladding and/or soffit installation?**

THANKS FOR YOUR TIME !

QUESTIONS?