

---

# CLADDING PROJECT GUIDE

---



It's Not Wood, It's Aluminum

---

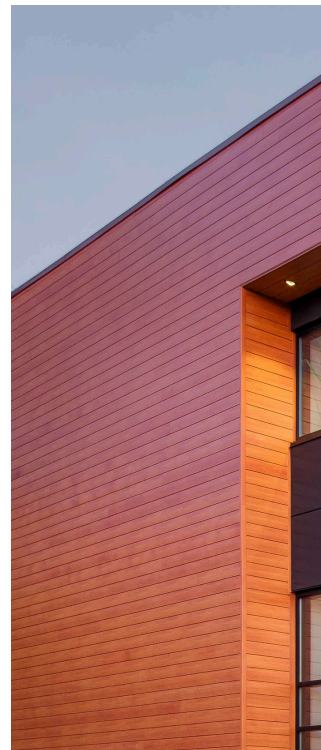
# Aluminum Cladding

Are you looking for a feature to set your project apart from the rest? Do you need cladding system that won't fuel a fire or swell and crack during the storm season? Why not try Knotwood Cladding?

Knotwood Cladding is made from 100% aluminum protected by a durable woodgrain powder coat finish. It's immune to fire, rust, rot, insects and will never warp, split or crack. Even extreme heat or freezing cold can't damage Knotwood. Coated in Knotwood's award winning woodgrain finish it meets the highest finishing standards in the world. Backed by an industry leading limited lifetime warranty you can be sure that Knotwood cladding won't let you down.

The unique hidden fastener system creates a clean finish that hides any unsightly screws or rivets. The interlocking system makes Knotwood cladding a smart choice when water penetration is a concern. In the event repairs are needed, Knotwood's unique top-down interlocking board system makes repairs fast and simple. In addition, Knotwood cladding requires next to no maintenance, just a quick wash with warm water will keep it looking brand new from the day it goes in.

Why wait for an inferior system to cost you time and money, damaging your building in the process? Let Knotwood cladding protect your investment, it won't let you down and it'll look great while doing it.





# Knotwood Colors

All Knotwood colors have been tested to withstand the most extreme environments and uphold the highest finishing standards in the world including the Australian, American and European standards. Backed by a limited lifetime warranty, it's no wonder Knotwood's award winning finish is coveted the world over. With a full range of color matched accessories available you can ensure a clean, uniform finish that will leave you breathless.

*Please note: These colors are a guide only contact our office for samples. Please be aware that Knotwood contains natural color variation consistent with that of real timber.*

## Stock Colors

Colors with a grey background are the Knotwood stock colors.

### WHITE SHADES



ASPEN



DRIFTWOOD



ASH



BEACH WOOD



ZEBRANO

### BLACK SHADES



BLACK ASH

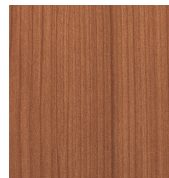
### YELLOW SHADES



IROKO



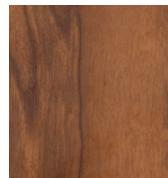
TASSIE OAK



LIGHT OAK



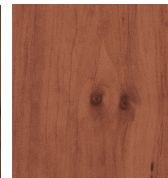
KNOTTY PINE



SPOTTED GUM



HICKORY



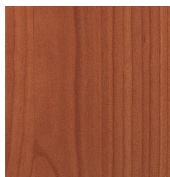
MAPLE



BLACKBUTT

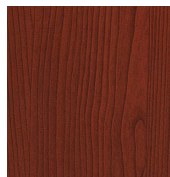


## YELLOW SHADES



ATLANTIC  
CEDAR

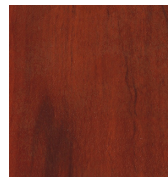
## ORANGE SHADES



AUSTRALIAN  
CEDAR



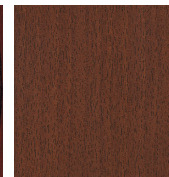
RED GUM



KOA



TIGER WOOD



MERBAU



IRON BARK

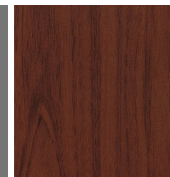
## LIGHT BROWN SHADES



EASTERN  
MAHOGANY



WESTERN RED  
CEDAR



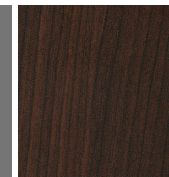
BUSH CHERRY



ELM



KWILA

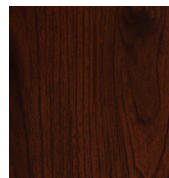


TEAK BROWN

## DARK BROWN SHADES



OLIVE TREE



BLACK WALNUT

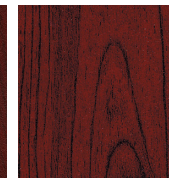


WENGÉ

## RED SHADES



JARRAH



SYDNEY BLUE



ROSE  
MAHOGANY

---

## Powdercoat Colors

If you want the reliability and consistency of a solid color, you can't go past our huge range of powder-coat colors. With the full range of Colorbond colors on hand and a library of hundreds of custom colors only a phone call away, you can have exactly the look you want. All of our solid colors carry the same limited lifetime warranty as our premier woodgrain finish and are all applied by our experienced and accredited applicators to ensure you get the gold-standard of quality you deserve.



---

## Frequently Asked Questions

### **Q. Is it waterproof?**

A. Knotwood cladding is designed as a façade fixed product and is not intended to be a total waterproofing system. The interlocking system lends itself well to easy waterproofing and it will not degrade if subjected to heavy rain or driving wind. Proper waterproofing measures should always be taken to prevent damage to your home. Please reference our installation guides for suggestions.

### **Q. How does it handle temperature changes?**

A. Aluminum is a thermally conductive material. The advantage of this is that high temperatures and freezing cold will not damage the material. It does mean however that it will expand and contract with temperature fluctuations. Our cladding system is designed with this in mind and uses specialised clips to conceal any possible thermal expansion or contraction without damaging the material. See the installation guide for details.

### **Q. Can it be used in hurricane areas?**

A. Knotwood's cladding is very durable when properly installed. When hurricanes are a likely or frequent occurrence in your area, engineering advice is always recommended. Knotwood Cladding is designed as an external fixing and relies largely on the strength of the surface it is fixed to in the event of a natural disaster.

### **Q. Is it fire-rated?**

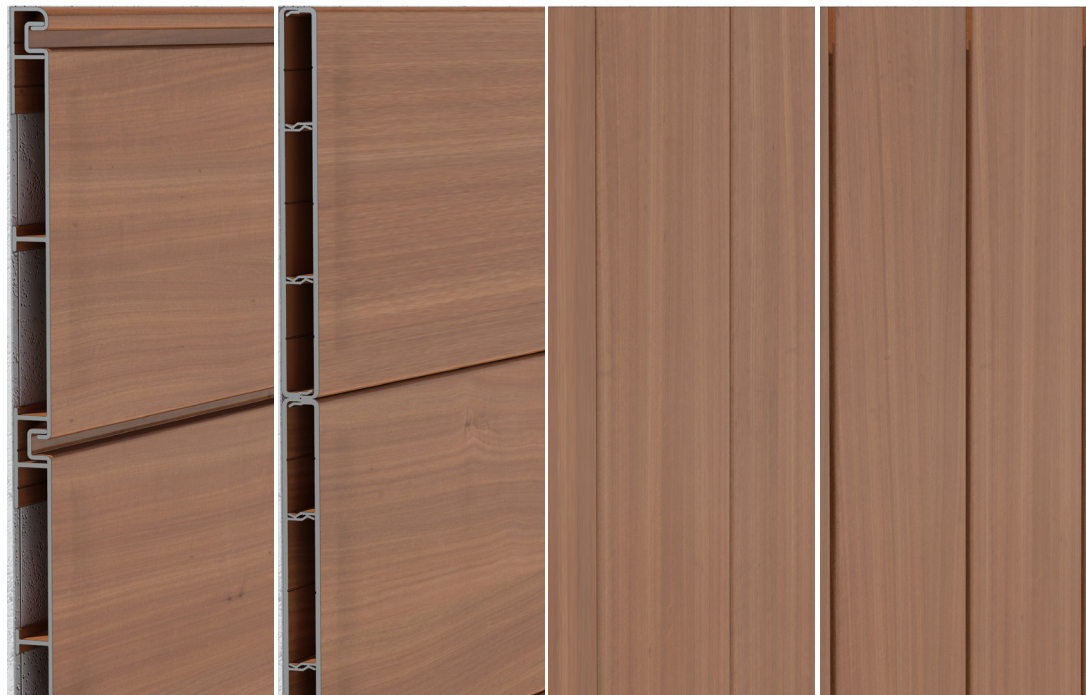
A. Knotwood is ideal for fire-danger areas. Aluminum does not ignite under normal circumstances and the coating used contains no combustible fuels or flammable materials. Please refer to our website for more information.

### **Q. How can I get it?**

A. Your local supplier of Knotwood can be contacted for information on pricing, lead times and any questions pertaining to your specific project. Please refer to our website for more information.

---

Our  
**RANGE**





---

## OUR STYLES

Knotwood Boards are as versatile as they are stunning. Easily fitted in external, internal horizontal or vertical applications, with or without a strong shadow line and in ribbed or smooth finish. Classic or contemporary style, Knotwood cladding hits the mark.

## BOARDS SIZES

Cladding boards are available in 18' 6". lengths. 4" and 6" smooth finish for when a smooth contemporary style is the best option.

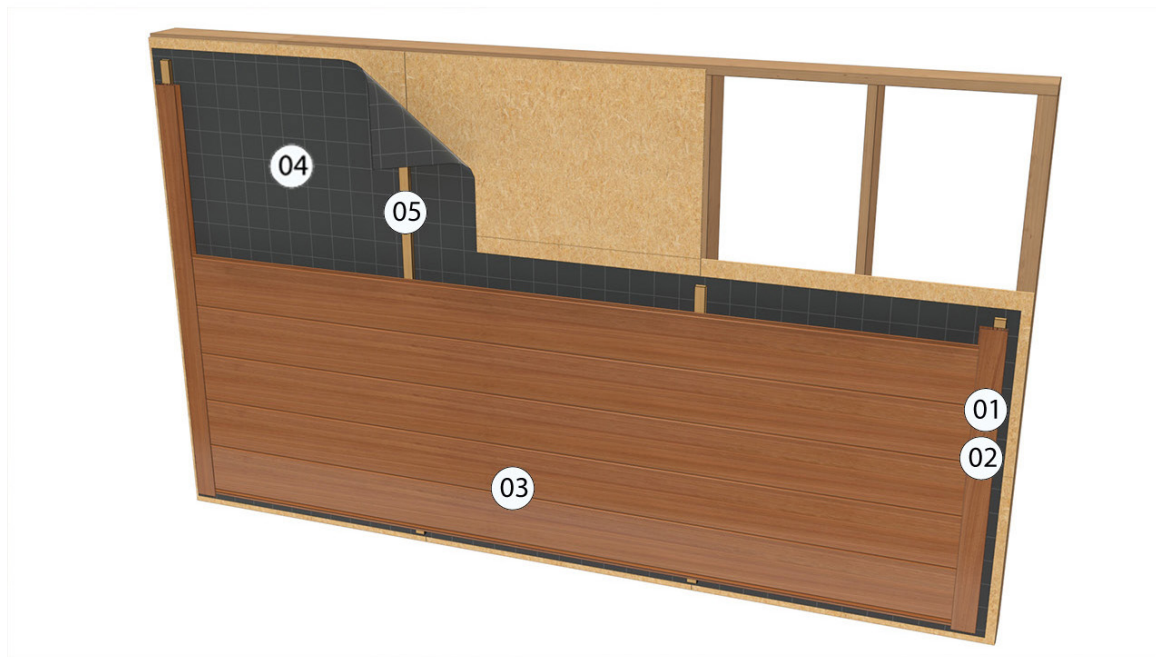
## WHY KNOTWOOD

Non-combustible, limited lifetime warranty, will never rust, warp or crack, low maintenance, natural woodgrain look, marine grade aluminum, concealed fasteners, huge range of colors and finishes.

## FINISHING CLIPS

Knotwood cladding is a system with a full range of finishing angles and clips for internal and external corners, joining boards and covering ends both around windows and doors and near walls. See the install guide for more information or visit our website.

[www.knotwood.com/siding/](http://www.knotwood.com/siding/)



- ① Finish Base
- ② Finishing Top
- ③ Cladding Board
- ④ Underlayment
- ⑤ Furring Strip

---

## Easy Installation

We strive to make Knotwood as easy, simple and efficient as possible. All of our Installation guides and technical manuals are readily available.

Each manual contains step-by-step instructions and product codes. You can train yourself in minutes and our sales team are always on hand to answer any questions you might have.

You can find the full list of guides by going to our website [www.knotwood.com](http://www.knotwood.com).

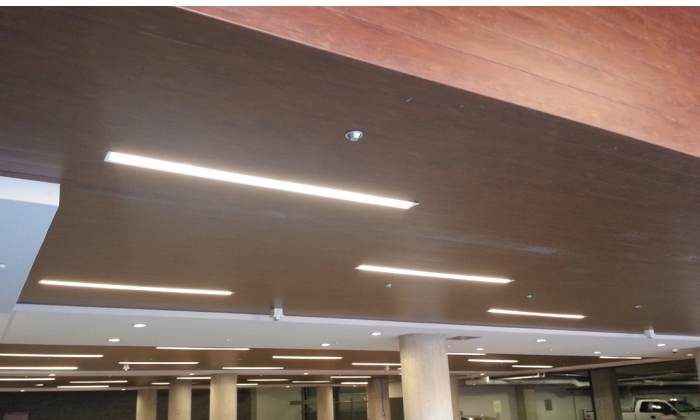
---

Our  
**PRODUCT**









# 01

## Thousand Spears – Denver, Colorado

The amount of work that went into this hotel in Colorado, quickly paid off when the cladding was installed. The beautiful ceiling cladding created a warm feel in the carparking area, that would have been cold and uninviting without it. Again the Low maintenance was really appealing and the results speak for themselves.



# 02

## Farmhouse - Dallas, Texas

One of the most impressive residential projects to date, this farmhouse in Dallas, Texas, has been nicknamed “the house of Knotwood” after it’s almost total knotwood cladding. The log cabin fantasy was brought into the 21st century with the high-tech, low maintenance solution to the high exposure the house would surely face through the changing year round climate of the region.

# 03

## McDonald's Cladding - Coffs Harbour, AUS

Knotwood is the cladding of choice for many fast food outlets around the country. National chains and restaurants have flocked to it for its low maintenance requirements and stunningly realistic looks. This project in Coffs Harbour was completed in our Light Oak color and works really well with the red brick work and black paneling.



# 04

## 1st Choice Liquor – Tweed Heads, AUS

This impressive project in Tweed heads uses the 'seamless' system to create a truly stunning look. The impressive facade would have been impossibly difficult to maintain had it been made from timber. The woodgrain look was something the owners couldn't do without, so Knotwood was their only option.





It's Not Wood, It's Aluminum

30 Tech Parkway South, Suite 400  
Peachtree Corners, GA 30092

Phone: **1.855.566.8966**

Web: **[www.knotwood.com](http://www.knotwood.com)**

E-mail: **[KnotwoodInfo@OmniMax.com](mailto:KnotwoodInfo@OmniMax.com)**

Fencing | Privacy Screens | Gates | Decking | Cladding | Battens | Soffits & Fascias