

ALCAS METAL

SANAYİ A.Ş.

CUSTOMER  
OMNIMAXCUSTOMER NR.  
MÜŞTERİ NO : KESP2WS030-5650ALCAS  
PROJECT NR. : PR.19250ALCAS  
EXT. DIE NR. :

Description : 2-WAY CHANNEL

ALCAS  
ALUMINIUM PROFILE SYSTEMS

--- = görünür yüzey

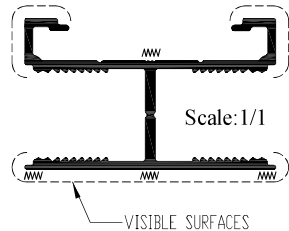
--- = APPARENT SURFACE

APPROVAL OF ALCAS

APPROVAL OF CUSTOMER

E. Bengü  
25th July 22Atın Jalifen  
7/25/2022

M/W STREAKING LINE

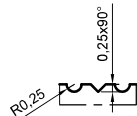
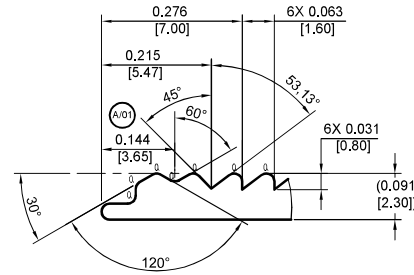


Scale: 1/1

VISIBLE SURFACES

DETAIL X  
SCALE 4 : 1

4X

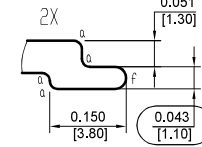
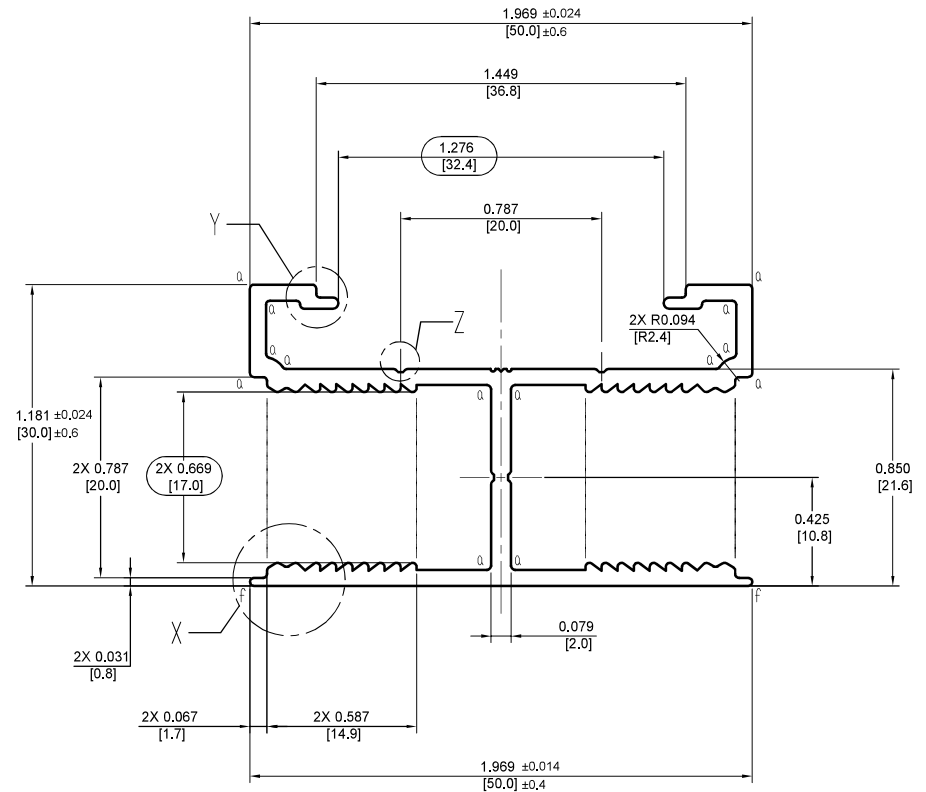
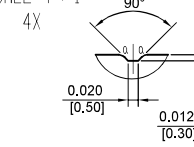
ALCAS ID MARK  
Scale  
ÖLÇEK: 6/1

NOTES, UNLESS OTHERWISE SPECIFIED:

- DUAL DIMENSIONS ARE IN [mm]
- DIMENSIONS ACROSS CENTERLINES ARE SYMMETRIC
- CIRCUMSCRIBING CIRCLE: Ø2.284 [0.581]
- NOMINAL WALL THICKNESS : 0.63±0.06 [1.64±0.15]
- LOCATION OF ANY MANUFACTURER MARK TO BE APPROVED BY RESPONSIBLE ENGINEERING DEPARTMENT
- DIMENSIONS SHOWN APPLY BEFORE POWDER COATING

 $a = R.016 [0.4]$ 

f = FULL R

(X.X) DENOTES CRITICAL DIMENSION  
ALL THREADS ARE CRITICALDETAIL Y  
SCALE 4 : 1DETAIL X  
SCALE 4 : 1PLEASE MARK THE APPARENT SURFACE, APPROVE  
THE DRAWING AND SEND US BY E-MAIL OR FAX TO START  
THE EXTRUSION DIE PRODUCTION.

R3				
R2				
R1				
Nr	REVİZYON (REVISION)	rev.by REV.YAPAN	revision date REV.TARİHİ	
<b>ALCAS</b>		φ Billet	7"	8"
A3	Scale: 2/1 ÖLÇEK:	Port number Fig.Sayı	Area : 0,424 inch <sup>2</sup> 273,80 mm <sup>2</sup>	Tolerance TOLERANS : AA,ANSİ H35,2,STD
Drawn by ÇİZEN	T.ATASAYAR	Mass : 0,499 lb/ft 0,742 kg/m	Alaşım (Alloy): 6060 T5	Tolerance Control SUPPORT DESTEK
Controlled by KONTROL E.	H.H. GEMİCİ	Total perimeter : 12,856 inch 326,54 mm	Du φ (mm) : 2.284"/58,01 mm	İnsert
Approval ONAY	E.BENGÜ	Draw Date TARİH : 16.07.2022	Smax (mm):	Bolster
Tel: +90 282 674 51 75 Fax: +90 282 674 51 71 e-mail: alcas@alcas.com.tr		Velimeşe O.SB Akbayır Küme Evleri No:16 Ergene / TEKİRDAĞ		
ALCAS METAL may not be held liable for infringement of copyrights and/or penalties arising out of usage(s) and/or revisions of this drawing that is suggested by the customer.				

Surface	Cut Length	Cut Length Tolerance
Knotwood Powder coating	5650mm 222.45"	+10/-0 +0.394/-0"