

Surface Finishing Variation Notice



K **KNOTWOOD**[™]
Stunning Aluminium

Due to the nature of the sublimation process, colour variation and some blemishes will occur.

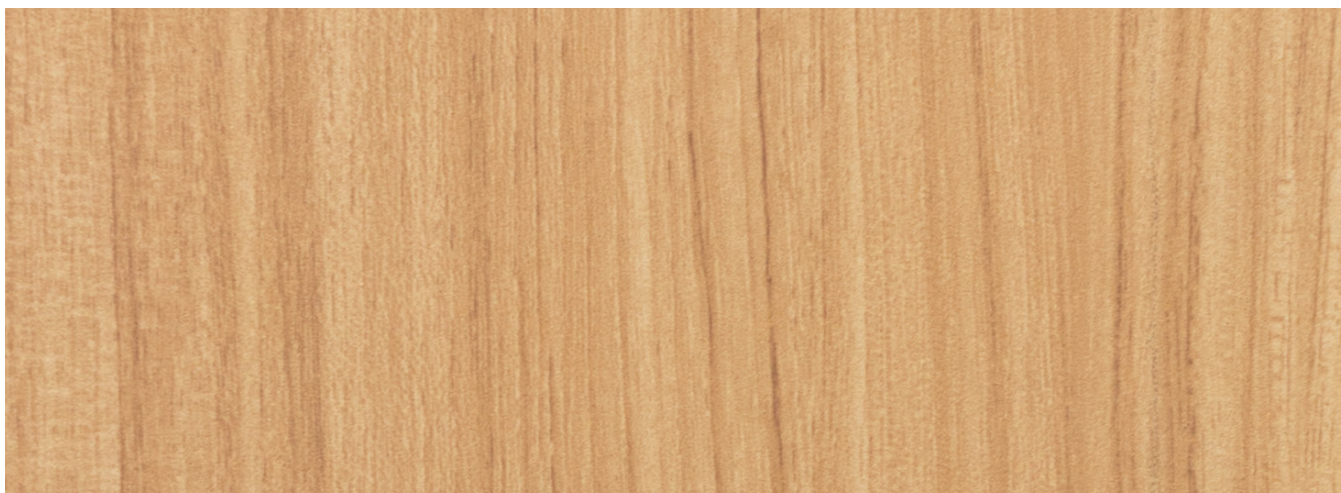
This unique product is designed to mimic real wood with colour and image inconsistencies.

Not every piece is designed to be exactly the same.

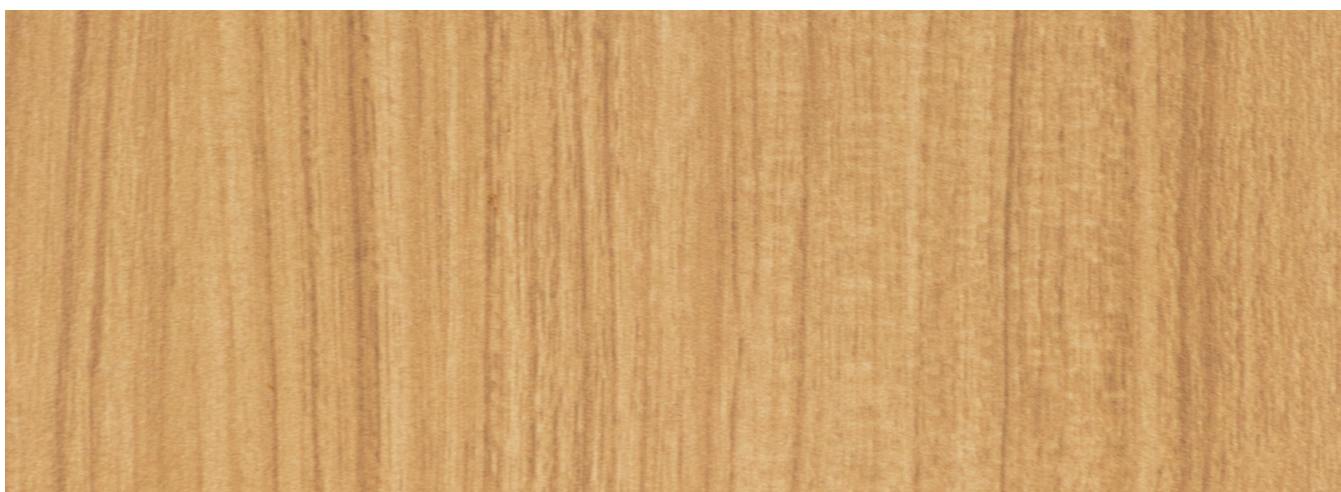
THE FOLLOWING IMAGES ARE A VISUAL GUIDE
TO THE WORDING OF CLAUSE 13 OF KNOTWOOD'S
TERMS AND CONDITIONS OF SALE.

Sublimated Finish

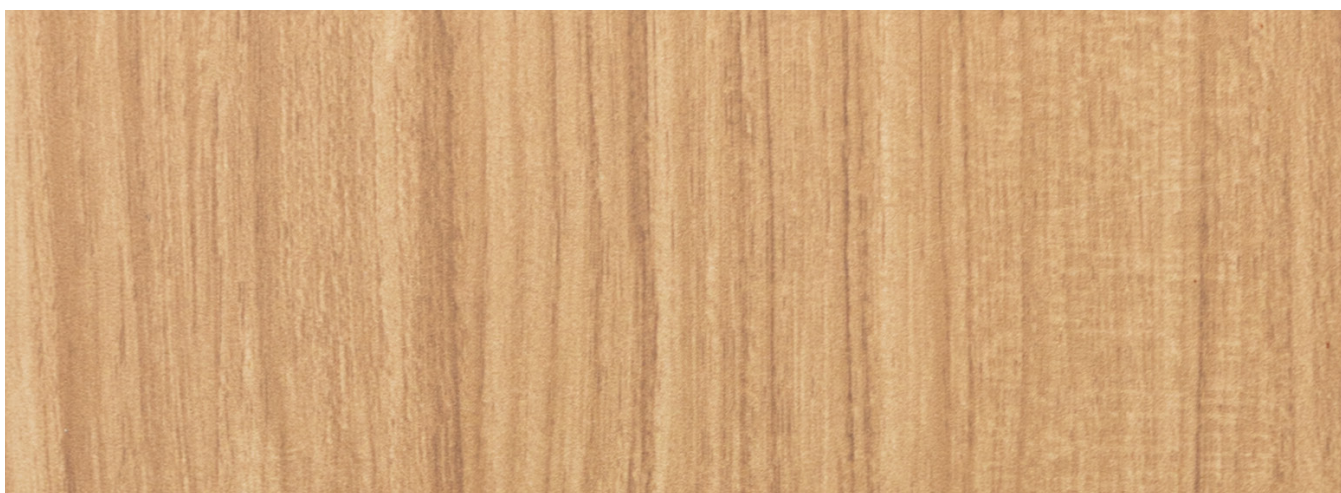
Sample One.



Sample Two.

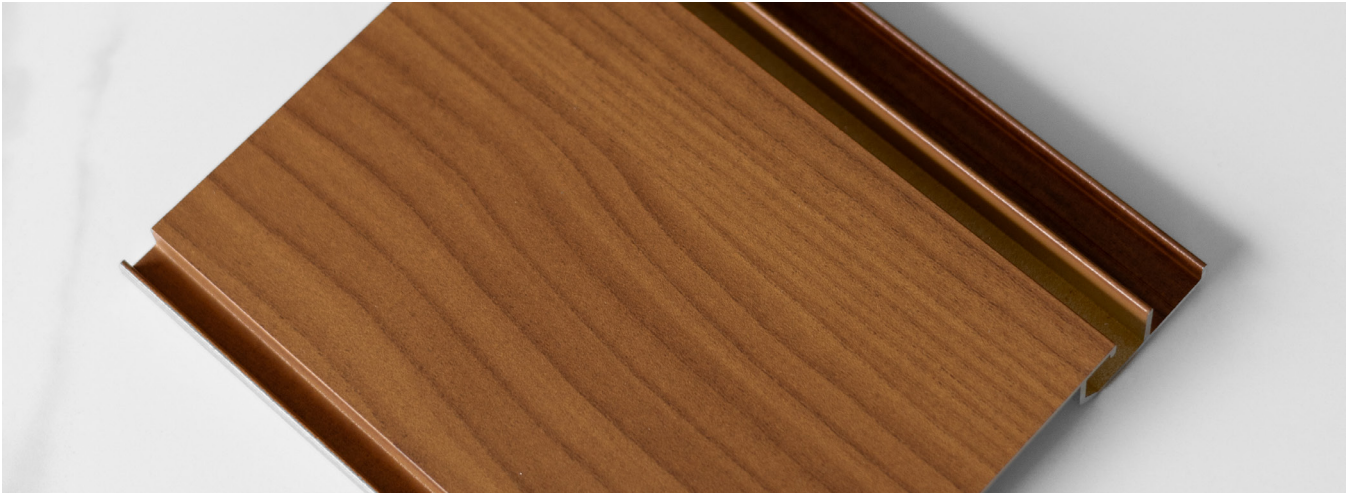


Sample Three.



Sublimated Finish

Image Distortion.



Film Crease.



Vacuumed Film Ends.



Sublimated Finish

Pattern Variation.



Film Seam Line.

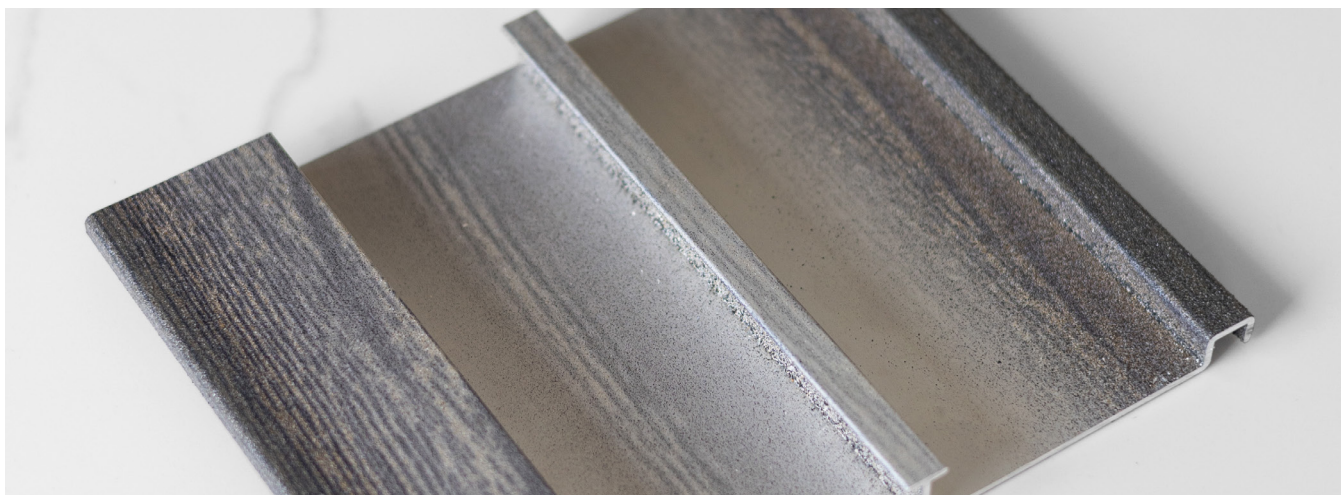


Hanging Hole.

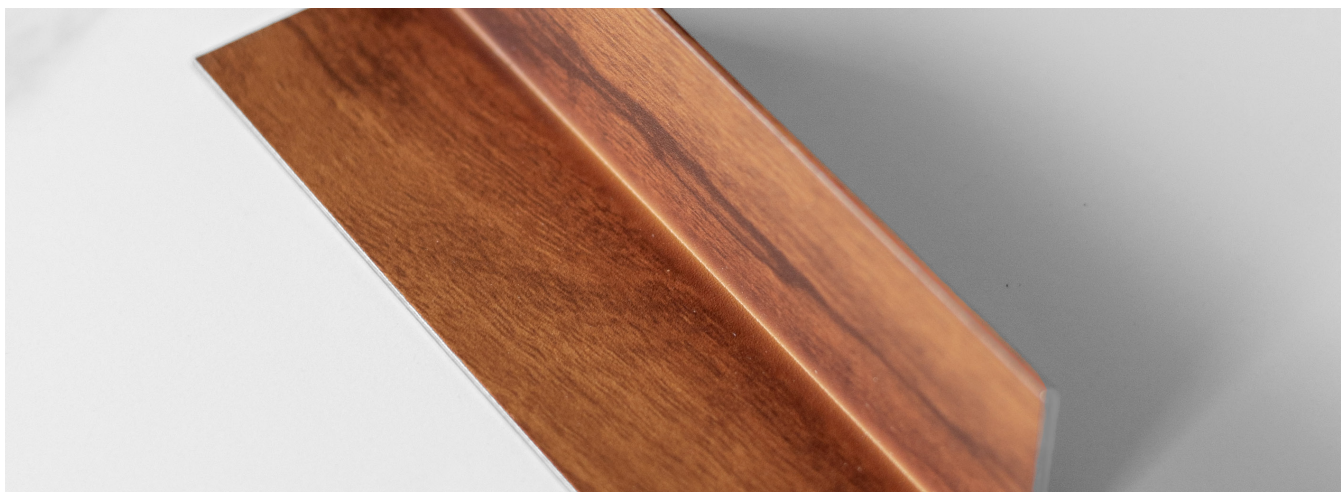


Sublimated Finish

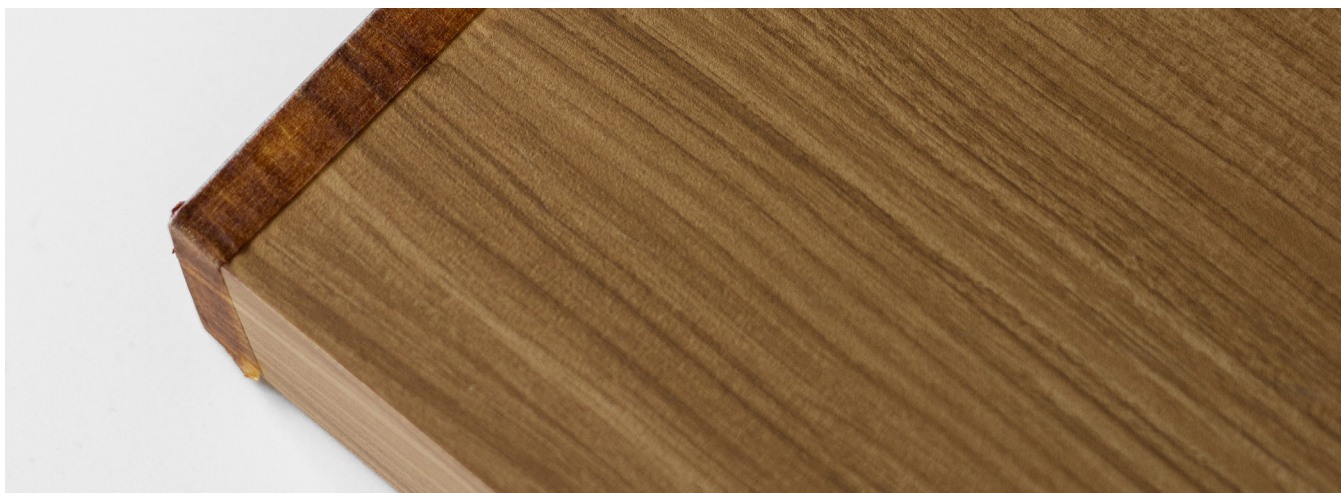
Non-Visible Surface.



Internal Angle.



Taped Ends.



Powder Coat Finish

Visible Surfaces.

The powder coating shall be of uniform appearance, colour and texture and be free of excessive scratches which penetrate through to the base metal. Surfaces are to be view from a minimum distance of 1 meter, where the product is installed and accessible under normal conditions (i.e. ground level wall – see figure 1.1). Further distance is allowed in proportion to the installation position of the finished product in applications where the product is in-accessible from ground level (see figure 1.2).

Viewing Conditions.

Figure 1.1

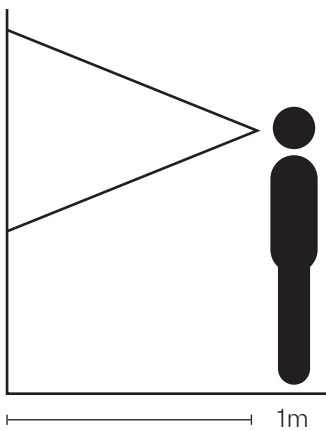
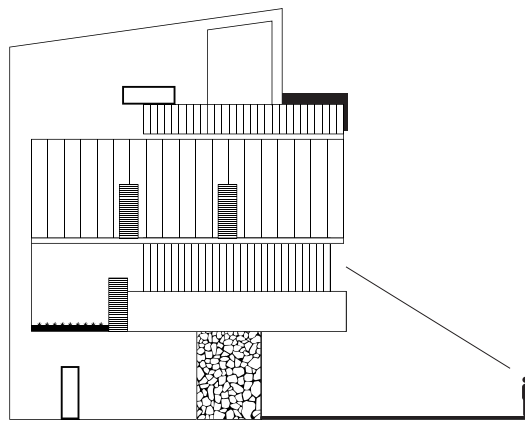


Figure 1.2



Secondary & Non-Visible Surfaces.

There is no guarantee of powder coat coverage or thickness in these areas which include but are not limited to internal corners, recesses and channels.