

A close-up photograph showing several vertical wooden planks. A metal fastener system is visible on the right side, consisting of a vertical metal rod with a cross-shaped metal bracket that secures the planks together. The wood has a natural, light brown grain. The background is dark and out of focus.

KNOTWOODTM

Detail Drawings Catalogue

TAB-LOCK Boards

Knotwood Australia

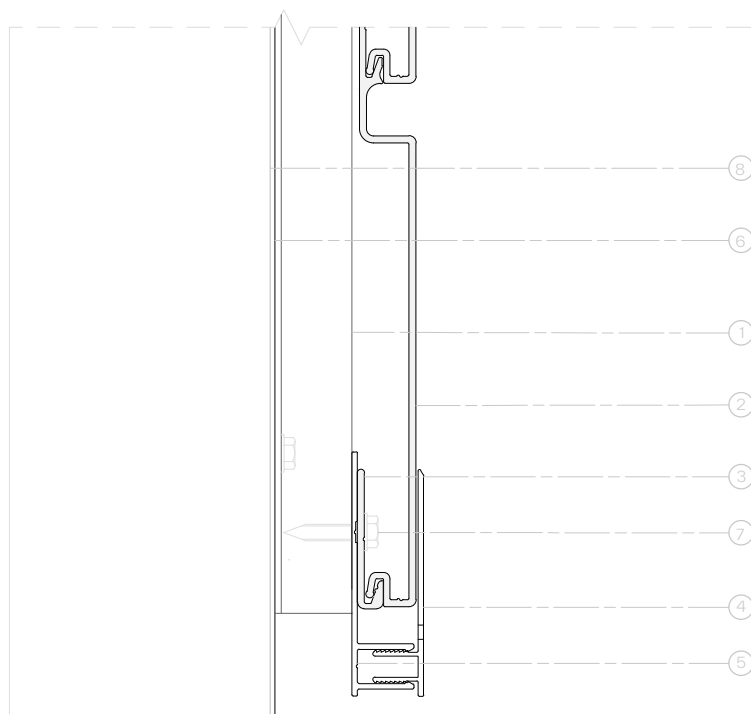
14.01.26



| | | | |
|------------------|----|---------------|----|
| Tab-Lock Starter | 1. | Reveal Trim | 7. |
| External Corner | 2. | Z Trim/Packer | 8. |
| Inner Corner | 3. | Cover Trims | 9. |
| Joiner Trim | 4. | | |
| Window Head Trim | 5. | | |
| Window Jamb Trim | 6. | | |



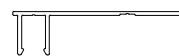
Detail - View



Profiles



KECTS
Tab-Lock - Starter



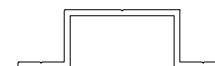
KECFF
Base Trim (F)



KECFSML
Slotted Cover Trim - Large - (M)



KECT150
Fixed Gap Tab-Lock Board - 150mm



KECT9025
Standard Profile - Top Hat - 90 x 25mm

KNOTWOOD™

Detail Drawings Library

TAB-LOCK BOARDS

Tab-Lock Starter - Horizontal Cladding

References

Knotwood

- ① Standard Profile - Top Hat - 90 x 25mm - KECT9025
- ② Fixed Gap Tab-Lock Board - 150mm - KECT150
- ③ Tab-Lock - Starter - KECTS
- ④ Slotted Cover Trim - Large - (M) - KECFSML
- ⑤ Base Trim (F) - KECFF

3rd Party

- ⑥ Vapour Barrier / Building Envelope
- ⑦ #10 x 5/8" Hex Washer Head Self-Drilling Screws
- ⑧ Building Substructure

Drawing

Version: V-001

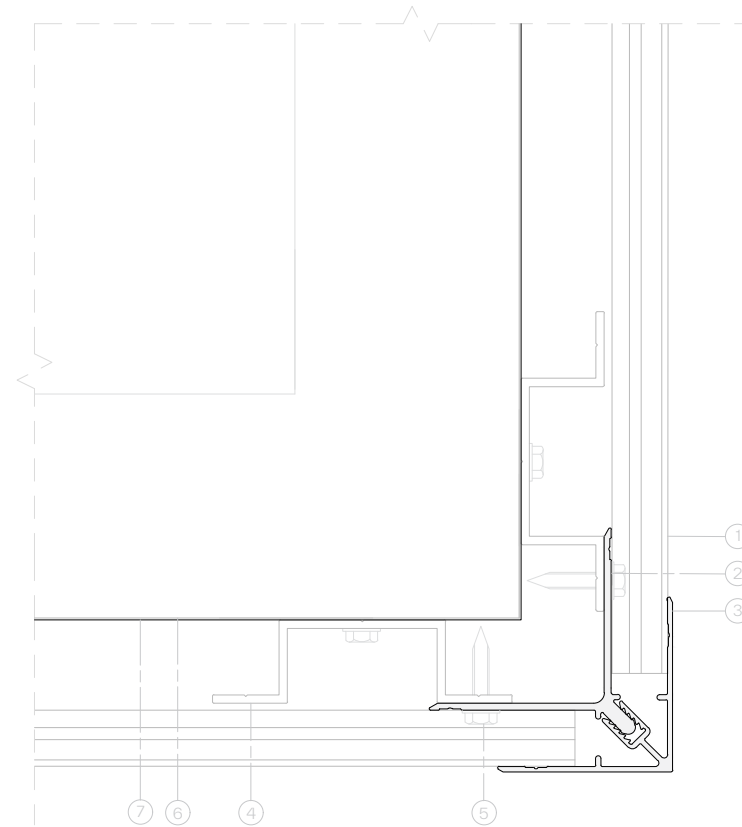
Date: 01-Oct-2025

Disclaimer

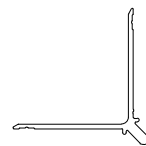
The information in this technical detail is given as a guide and is intended for use in relation to the relevant Knotwood products only. The customer's project designer is ultimately responsible for special design and detailing to ensure the product's use is fit for purpose. The customer's project designer needs to give extra consideration to product suitability to take into account any specialised factors of the project. This specification detail must be reviewed in conjunction with the relevant Knotwood product installation guide current at the time of installation, and all other relevant Knotwood product technical literature.



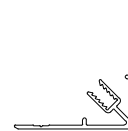
Detail - View



Profiles



KECCML
Cladding Trim - Corner - 50mm (M)



KECCF-02
Reversible Corner Cover
Trim - Square - 45mm (F)



KECT150
Fixed Gap Tab-Lock Board - 150mm



KECT9025
Standard Profile - Top Hat - 90 x 25mm

KNOTWOOD™

Detail Drawings Library

TAB-LOCK BOARDS

External Corner - Horizontal Cladding

References

Knotwood

- ① Fixed Gap Tab-Lock Board - 150mm - KECT150
- ② Reversible Base Corner Trim - (M) - KECCML
- ③ Reversible Corner Cover Trim - Square - 45mm - (F) - KECCML-02
- ④ Standard Profile - Top Hat - 90 x 25mm - KECT9025

3rd Party

- ⑤ #10 x 5/8" Hex Washer Head Self-Drilling Screws
- ⑥ Building Substructure
- ⑦ Vapour Barrier / Building Envelope

Drawing

Version: V-001

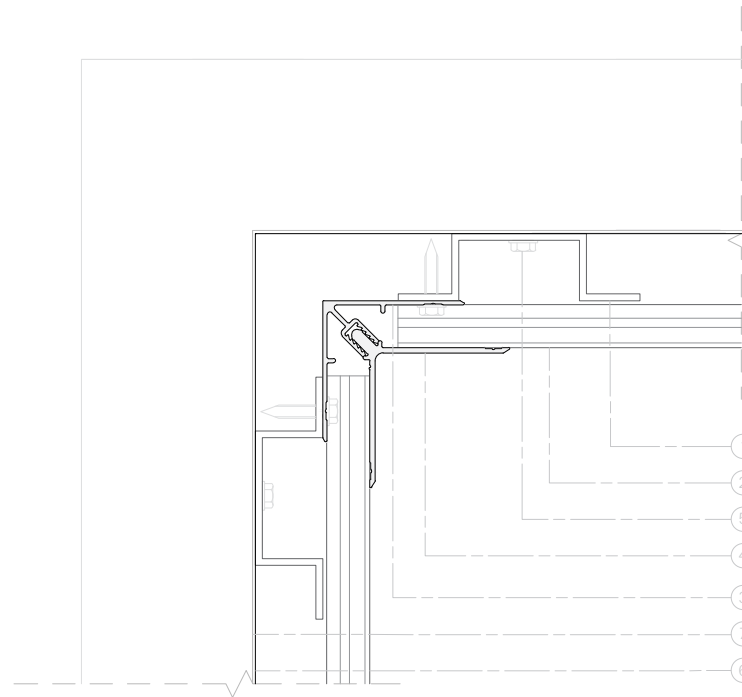
Date: 01-Oct-2025

Disclaimer

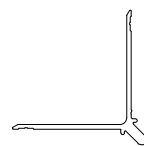
The information in this technical detail is given as a guide and is intended for use in relation to the relevant Knotwood products only. The customer's project designer is ultimately responsible for special design and detailing to ensure the product's use is fit for purpose. The customer's project designer needs to give extra consideration to product suitability to take into account any specialised factors of the project. This specification detail must be reviewed in conjunction with the relevant Knotwood product installation guide current at the time of installation, and all other relevant Knotwood product technical literature.



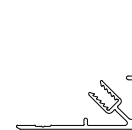
Detail - View



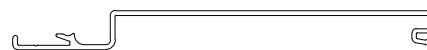
Profiles



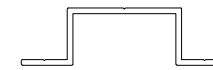
KECCML
Reversible Base Corner Trim - (M)



KECCF-02
Reversible Corner Cover Trim -
Square - 45mm - (F)



KECT150
Fixed Gap Tab-Lock Board - 150mm



KECT9025
Standard Profile - Top Hat - 90 x 25mm

KNOTWOOD™

Detail Drawings Library

TAB-LOCK BOARDS

Internal Corner - Horizontal Cladding

References

Knotwood

- ① Standard Profile - Top Hat - 90 x 25mm - KECT9025
- ② Fixed Gap Tab-Lock Board - 150mm - KECT150
- ③ Reversible Corner Cover Trim - Square - 45mm - (F) - KECCML-02
- ④ Reversible Base Corner Trim - (M) - KECCML

3rd Party

- ⑤ #10 x 5/8" Hex Washer Head Self-Drilling Screws
- ⑥ Vapour Barrier / Building Envelope
- ⑦ Building Substructure

Drawing

Version: V-001

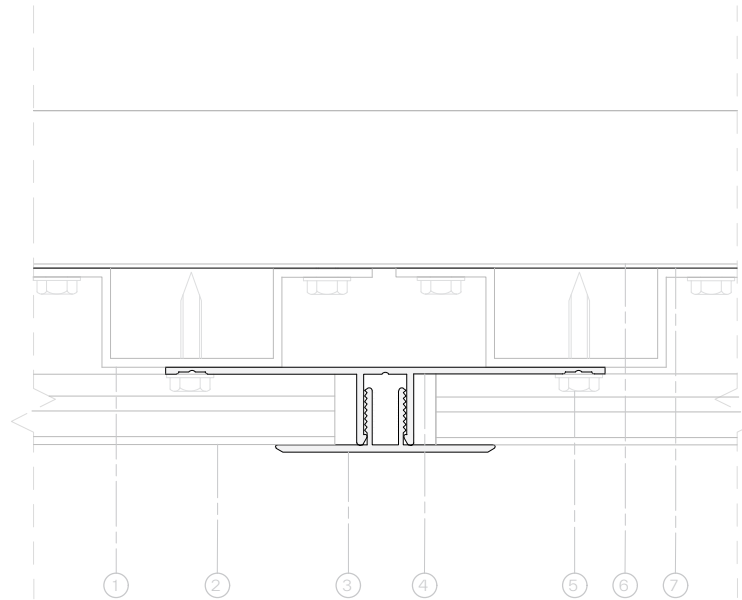
Date: 01-Oct-2025

Disclaimer

The information in this technical detail is given as a guide and is intended for use in relation to the relevant Knotwood products only. The customer's project designer is ultimately responsible for special design and detailing to ensure the product's use is fit for purpose. The customer's project designer needs to give extra consideration to product suitability to take into account any specialised factors of the project. This specification detail must be reviewed in conjunction with the relevant Knotwood product installation guide current at the time of installation, and all other relevant Knotwood product technical literature.



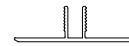
Detail - View



Profiles



KECJF
Base Joiner Trim - (F)



KECJM
Cover Joiner Trim - (M)



KECT150
Fixed Gap Tab-Lock Board - 150mm



KECT9025
Standard Profile - Top Hat - 90 x 25mm

KNOTWOOD™

Detail Drawings Library

TAB-LOCK BOARDS

Joiner Trim - Horizontal Cladding

References

Knotwood

- ① Standard Profile - Top Hat - 90 x 25mm - KECT9025
- ② Fixed Gap Tab-Lock Board - 150mm- KECT150
- ③ Cover Joiner Trim - (M) - KECJM
- ④ Base Joiner Trim - (F) - KECJF

3rd Party

- ⑤ #10 x 5/8" Hex Washer Head Self-Drilling Screws
- ⑥ Building Substructure
- ⑦ Vapour Barrier / Building Envelope

Drawing

Version: V-001

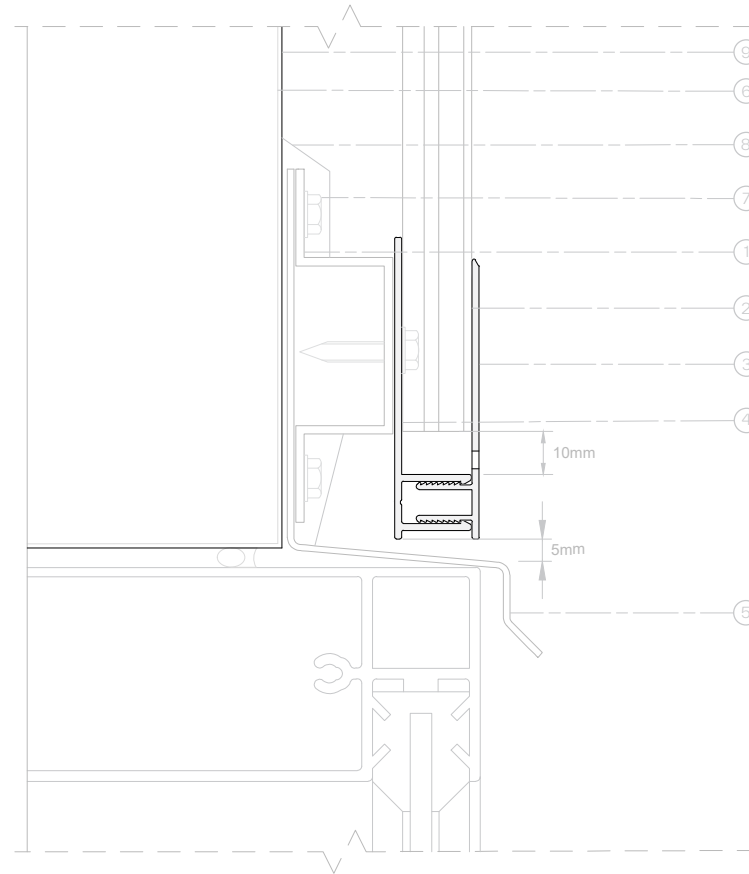
Date: 01-Oct-2025

Disclaimer

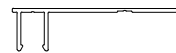
The information in this technical detail is given as a guide and is intended for use in relation to the relevant Knotwood products only. The customer's project designer is ultimately responsible for special design and detailing to ensure the product's use is fit for purpose. The customer's project designer needs to give extra consideration to product suitability to take into account any specialised factors of the project. This specification detail must be reviewed in conjunction with the relevant Knotwood product installation guide current at the time of installation, and all other relevant Knotwood product technical literature.



Detail - View



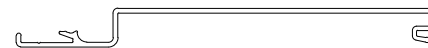
Profiles



KECSFF
Base Trim - (F)



KECSFML
Slotted Cover Trim - Large (M)



KECT150
Fixed Gap Tab-Lock Board - 150mm



KECT9025
Standard Profile - Top Hat - 90 x 25mm

KNOTWOOD™

Detail Drawings Library

TAB-LOCK BOARDS

Window Head Trim - Vertical
Cladding

References

Knotwood

- ① Standard Profile - Top Hat - 90 x 25mm - KECT9025
- ② Fixed Gap Tab-Lock Board - 150mm - KECT150
- ③ Slotted Cover Trim - Large - (M) - KECSFML
- ④ Base Trim - (F) - KECSFF

3rd Party

- ⑤ Window Flashing (by other)
- ⑥ Building Substructure
- ⑦ #10 x 5/8" Hex Washer Head Self-Drilling Screws
- ⑧ Flexible Sealant Tape
- ⑨ Vapour Barrier / Building Envelope

Drawing

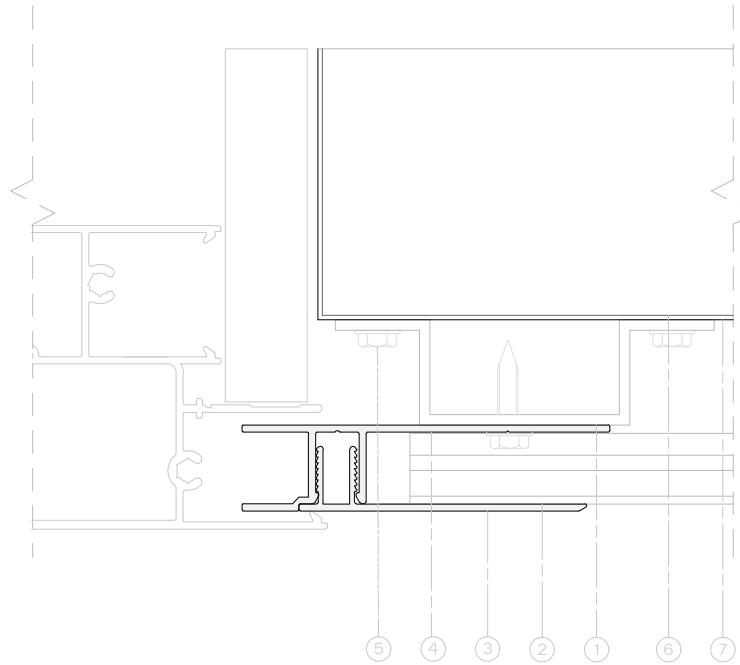
Version: V-001
Date: 01-Oct-2025

Disclaimer

The information in this technical detail is given as a guide and is intended for use in relation to the relevant Knotwood products only. The customer's project designer is ultimately responsible for special design and detailing to ensure the product's use is fit for purpose. The customer's project designer needs to give extra consideration to product suitability to take into account any specialised factors of the project. This specification detail must be reviewed in conjunction with the relevant Knotwood product installation guide current at the time of installation, and all other relevant Knotwood product technical literature.



Detail - View



KNOTWOOD™

Detail Drawings Library

TAB-LOCK BOARDS

Window Jamb Trim - Horizontal Cladding

References

Knotwood

- ① Standard Profile - Top Hat - 90 x 25mm - KECT9025
- ② Fixed Gap Tab-Lock Board - 150mm - KECT150
- ③ Cover Trim - Large - (M) - KECFML
- ④ Window Jamb Base Trim - (F) - KECWJF

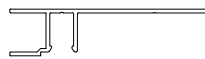
3rd Party

- ⑤ #10 x 5/8" Hex Washer Head Self-Drilling Screws
- ⑥ Building Substructure
- ⑦ Vapour Barrier / Building Envelope

Drawing

Version: V-001
Date: 01-Oct-2025

Profiles



KECWJF
Window Jamb Base Trim - (F)



KECFML
Cover Trim - Large - (M)



KECT150
Fixed Gap Tab-Lock Board - 150mm



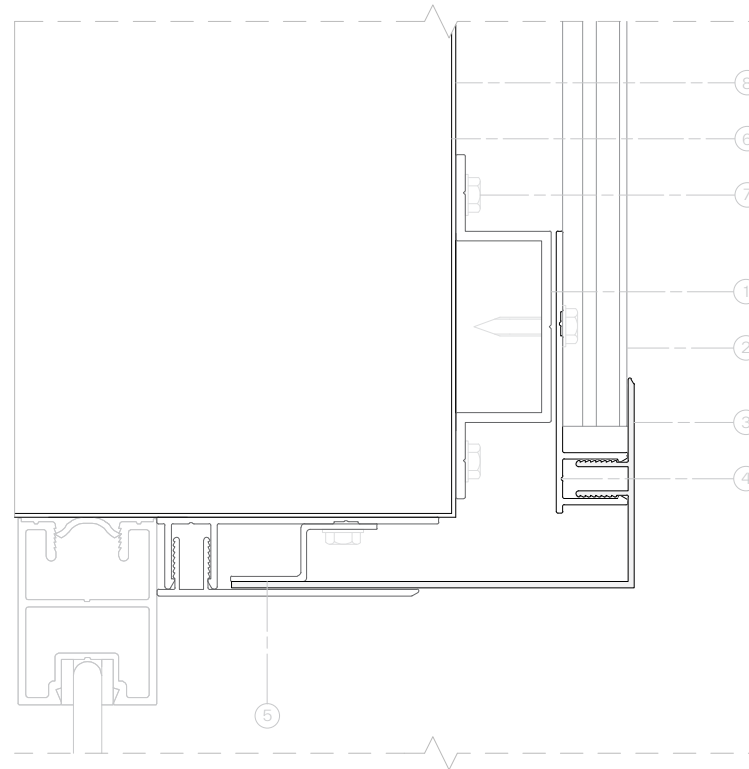
KECT9025
Standard Profile - Top Hat - 90 x 25mm

Disclaimer

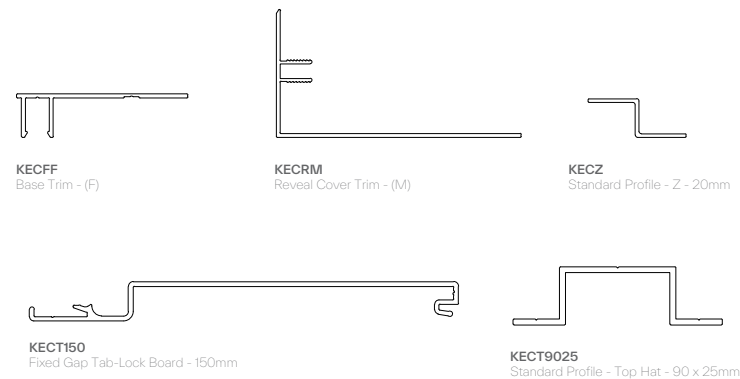
The information in this technical detail is given as a guide and is intended for use in relation to the relevant Knotwood products only. The customer's project designer is ultimately responsible for special design and detailing to ensure the product's use is fit for purpose. The customer's project designer needs to give extra consideration to product suitability to take into account any specialised factors of the project. This specification detail must be reviewed in conjunction with the relevant Knotwood product installation guide current at the time of installation, and all other relevant Knotwood product technical literature.



Detail - View



Profiles



KNOTWOOD™

Detail Drawings Library

TAB-LOCK BOARDS

Reveal Trim - Horizontal Cladding

References

Knotwood

- ① Standard Profile - Top Hat - 90 x 25mm - KECT9025
- ② Fixed Gap Tab-Lock Board - 150mm - KECT150
- ③ Reveal Cover Trim - (M) - KECRM
- ④ Base Trim - (F) - KECFF
- ⑤ Standard Profile - Z - 20mm- KECZ

3rd Party

- ⑥ Building Substructure
- ⑦ #10 x 5/8" Hex Washer Head Self-Drilling Screws
- ⑧ Vapour Barrier / Building Envelope

Drawing

Version: V-001

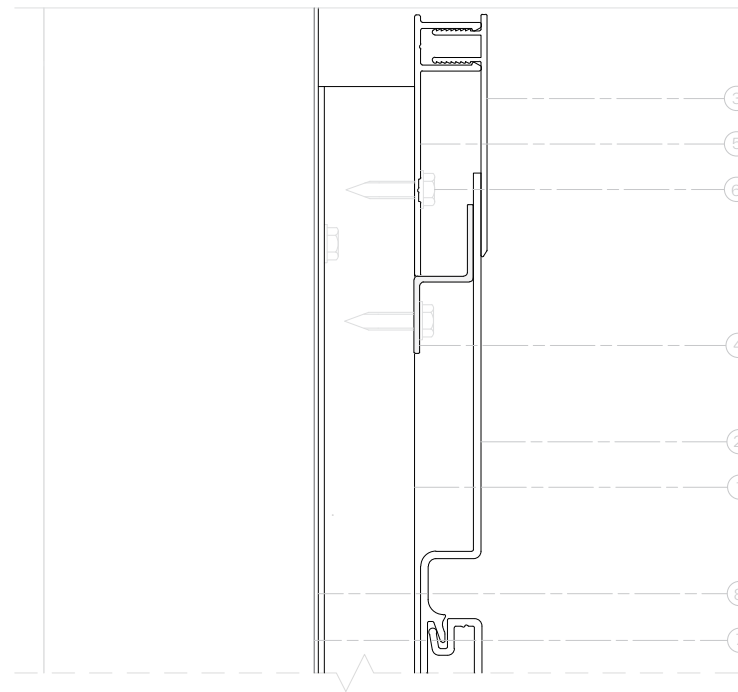
Date: 01-Oct-2025

Disclaimer

The information in this technical detail is given as a guide and is intended for use in relation to the relevant Knotwood products only. The customer's project designer is ultimately responsible for special design and detailing to ensure the product's use is fit for purpose. The customer's project designer needs to give extra consideration to product suitability to take into account any specialised factors of the project. This specification detail must be reviewed in conjunction with the relevant Knotwood product installation guide current at the time of installation, and all other relevant Knotwood product technical literature.



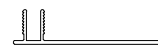
Detail - View



Profiles



KECFF
Base Trim - (F)



KECFML
Cover Trim - Large - (M)



KECZ
Standard Profile - Z - 20mm



KECT150
Fixed Gap Tab-Lock Board - 150mm



KECT9025
Standard Profile - Top Hat - 90 x 25mm

KNOTWOOD™

Detail Drawings Library

TAB-LOCK BOARDS

Z Trim/Packer - Horizontal Cladding

References

Knotwood

- ① Standard Profile - Top Hat - 90 x 25mm - KECT9025
- ② Fixed Gap Tab-Lock Board - 150mm - KECT150
- ③ Cover Trim - Large - (M) - KECFML
- ④ Standard Profile - Z - 20mm - KECZ
- ⑤ Base Trim - (F) - KECFF

3rd Party

- ⑥ #10 x 5/8" Hex Washer Head Self-Drilling Screws
- ⑦ Building Substructure
- ⑧ Vapour Barrier / Building Envelope

Drawing

Version: V-001

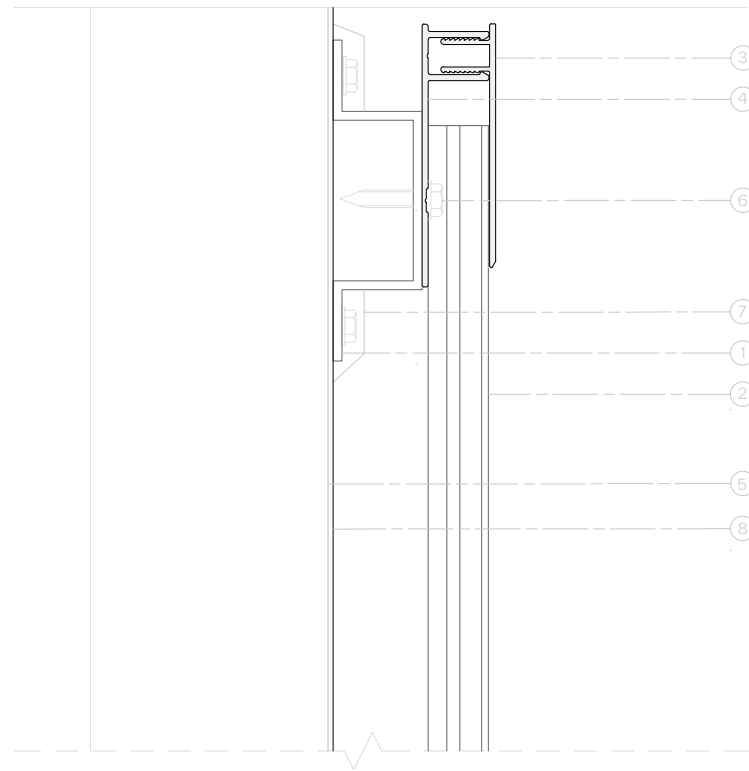
Date: 01-Oct-2025

Disclaimer

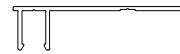
The information in this technical detail is given as a guide and is intended for use in relation to the relevant Knotwood products only. The customer's project designer is ultimately responsible for special design and detailing to ensure the product's use is fit for purpose. The customer's project designer needs to give extra consideration to product suitability to take into account any specialised factors of the project. This specification detail must be reviewed in conjunction with the relevant Knotwood product installation guide current at the time of installation, and all other relevant Knotwood product technical literature.



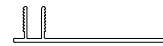
Detail - View



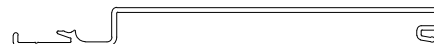
Profiles



KECFF
Base Trim - (F)



KECFML
Cover Trim - Large - (M)



KECT150
Fixed Gap Tab-Lock Board - 150mm



KECT9025
Standard Profile - Top Hat - 90 x 25mm

KNOTWOOD™

Detail Drawings Library

TAB-LOCK BOARDS

Cover Trims - Vertical Cladding

References

Knotwood

- ① Standard Profile - Top Hat - 90 x 25mm - KECT9025
- ② Fixed Gap Tab-Lock Board - 150mm - KECT150
- ③ Cover Trim - Large - (M) - KECFML
- ④ Base Trim - (F) - KECFF

3rd Party

- ⑤ Building Substructure
- ⑥ #10 x 5/8" Hex Washer Head Self-Drilling Screws
- ⑦ Flexible Sealant Tape
- ⑧ Vapour Barrier / Building Envelope

Drawing

Version: V-001

Date: 01-Oct-2025

Disclaimer

The information in this technical detail is given as a guide and is intended for use in relation to the relevant Knotwood products only. The customer's project designer is ultimately responsible for special design and detailing to ensure the product's use is fit for purpose. The customer's project designer needs to give extra consideration to product suitability to take into account any specialised factors of the project. This specification detail must be reviewed in conjunction with the relevant Knotwood product installation guide current at the time of installation, and all other relevant Knotwood product technical literature.

KNOTWOODTM

Knotwood AU

1 300 566 896

sales@knotwood.com.au

Knotwood US

602 313 1641

sales@knotwood.com

Knotwood UK

0800 131 3165

sales@knotwood.co.uk

© KNOTWOOD Pty Ltd. All rights reserved.

The information contained in this document is the intellectual property of KNOTWOOD Pty Ltd. and is protected by copyright and other intellectual property laws.