



# **KNOTWOOD**<sup>™</sup>

Quick Start Guide.

## Operable Louvres

31/03/2026.

---

## Before Installation.

You might need the following tools.

---



Screws



Level



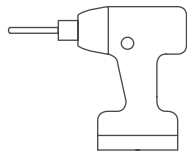
Measuring Tape



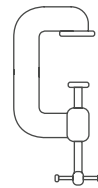
Rubber Mallet



Drop-Saw



Impact Driver/Drill



Clamp

## Pre Installation Checklist.

---



### Delivery Inspection.

- Check packs for freight damage on arrival.
- Report any damage to your Knotwood rep within 24 hours.



### Unpacking.

- Cut nylon straps and remove the outer wrap.
- Check ends of the profiles and trim if required.
- Take care not to scratch the coated material during handling.



### Cutting Tools.

- Compound mitre saw (Aluminium multi-tooth blade)



### Fasteners.

- Use 304 or 316 grade stainless steel.
- In non-marine zone, hot-dip galvanised fasteners may be used.

# Solution Profiles.

## Blades.

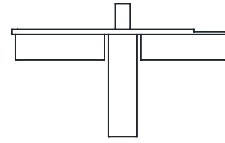
---



KELB  
Shutter - Blade - 88 mm

## Accessories.

---



KAEPL8812  
Plastic Louvre Plug - Adjustable - 88

## Routed Frames.

---



KELORAM  
Shutter - Operable Rail - Adjustable



KELORAFS  
Shutter - Operable Rail (SML) - Bottom



KELORM  
Shutter - Operable Rail - Mid



KELOR  
Shutter - Operable Rail - Top



KELOH  
Shutter - Operable H Section



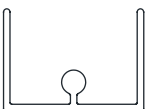
KELOC  
Shutter - Operable Control Bar



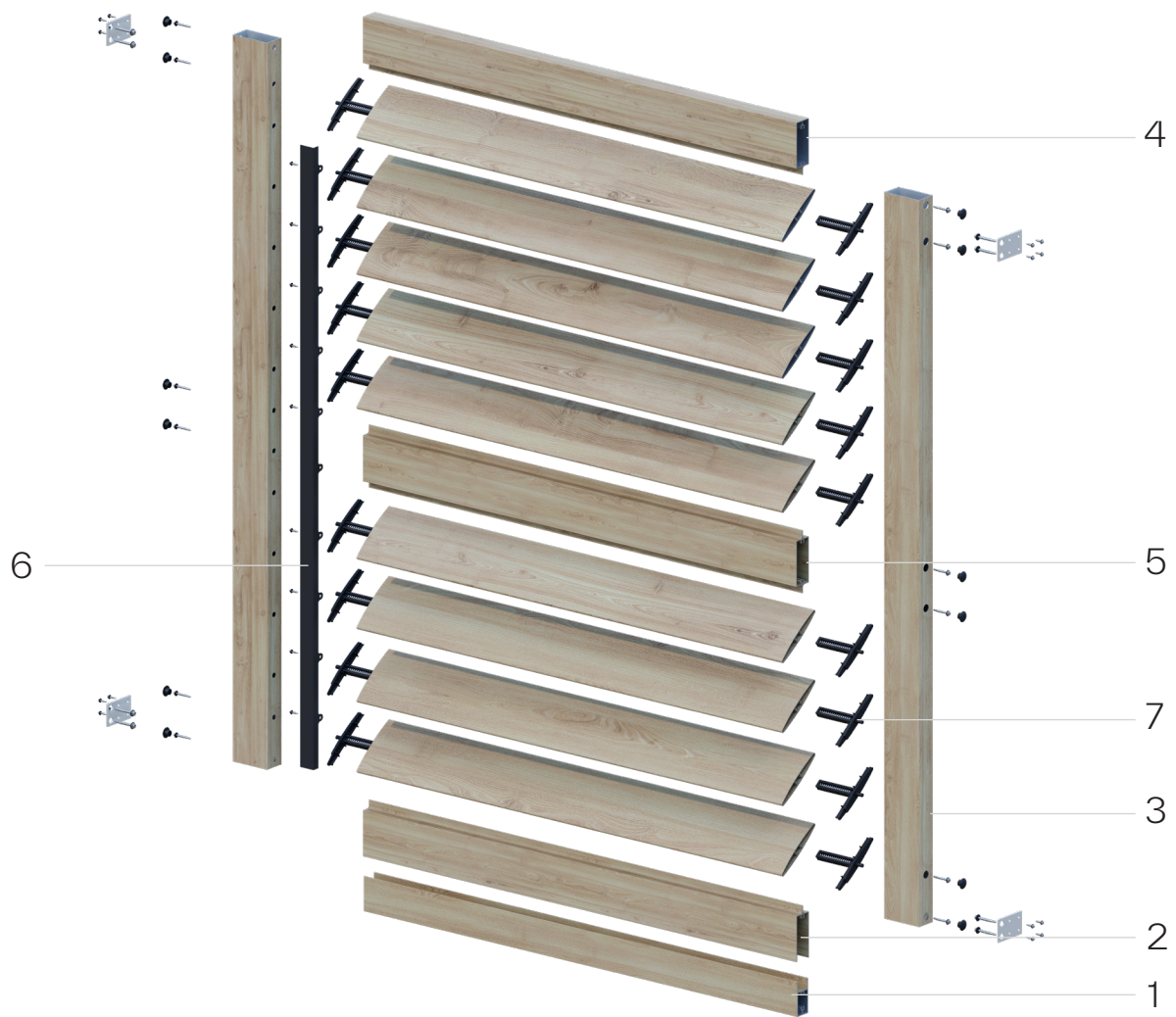
KELORAF  
Shutter - Operable Rail (LRG) - Bottom



KELOS  
Shutter - Operable Rail - Side



KELOTB  
Shutter - Operable Track - Bottom



Components

1. Shutter -  
Operable Rail (SML) - Bottom -  
KELORAFS

3. Shutter -  
Operable Track - Side -  
KELOS

5. Shutter -  
Operable Rail - Mid -  
KELORM

7. Plastic Louvre Plug -  
Adjustable - 88 x 12mm -  
KAEPL8812

2. Shutter -  
Operable Rail - Adjustable  
KELORAM

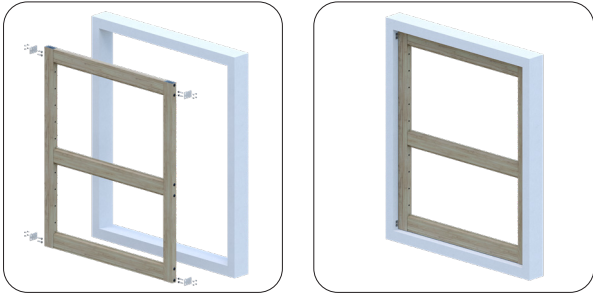
4. Shutter -  
Operable Rail - Top -  
KELOR

6. Shutter -  
Operable Control Bar -  
KELOC

# Installation.

## Support Surface Preparation.

---



The following solution requires that the opening where operable louvres will be installed includes an additional frame for fixing them.

## Assembly Instructions.

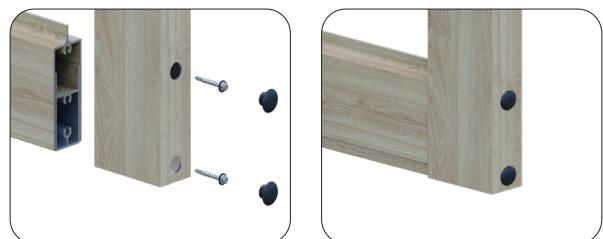
---

### Step 1.



To begin, identify and assemble the components of the operable rail frame. Firstly adjust the **Shutter - (SML) - Bottom (KELORAFS)** profile and the **Shutter - Adjustable (KELORAM)** profile. They must be adjusted to match the size of the top of the frame.

### Step 2.



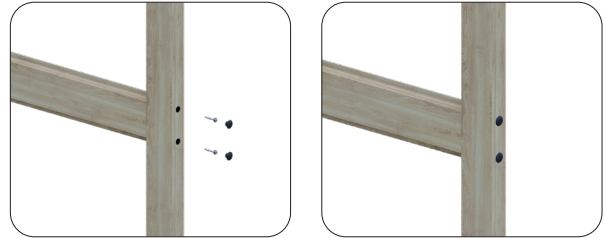
Position the **Shutter - Side (KELOS)** profile, ensuring it is correctly aligned with the bottom profiles, while also fixing the **Shutter - Top (KELOR)** profile to form the complete frame, and secure all components together using appropriate fasteners.

# Installation.

## Assembly Instructions.

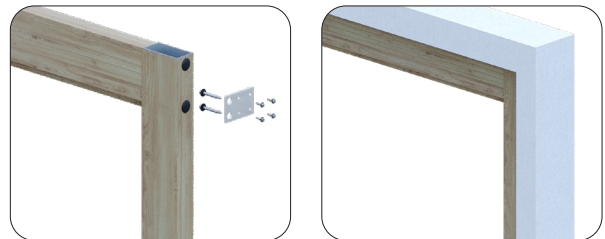
---

### Step 3.



Fix the **Shutter - Mid (KELORM)** profile into the frame at the required position, ensuring it is correctly aligned before fastening it securely into place using the appropriate fixings.

### Step 4.



Fix the completed frame assembly into the prepared structural opening using fixing plates, or approved concealed fixing methods as required.

### Step 5.



Each **Blade (KELB)** requires endcaps before installation. Insert pivot caps into both ends of each blade.

# Installation.

## Assembly Instructions.

---

### Step 6.



With the frame secured and blades capped, insert one endcap into the top of the frame. Confirm **Blade (KELB)** rotates freely. Place another Blade below, then repeat. Working consistently from top to bottom.

### Step 7.



Fix the **Control Bar (KELOC)** into each end of the blades, using appropriate fixings as required.



# **KNOTWOOD™**

## **KNOTWOOD AUS**

[sales@knotwood.com.au](mailto:sales@knotwood.com.au)

1 300 566 896

7/63 Burnside Road,  
Stapylton, QLD 4207 Australia

## **KNOTWOOD USA**

[sales@knotwood.com](mailto:sales@knotwood.com)

+1 855 566 8966

5555 W Roosevelt Street, Suite 400, Phoenix  
AZ 85043 United States

## **KNOTWOOD UK**

[sales@knotwood.co.uk](mailto:sales@knotwood.co.uk)

0800 131 3165

Unit 44, 45 Wolston Croft,  
Northwich CW8 4DL, United Kingdom