

KNOTWOODTM

Quick Start Guide.

Track Battens

Before Installation.

You might need the following tools.



Screws



Level



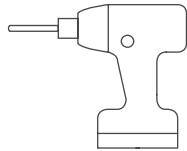
Measuring Tape



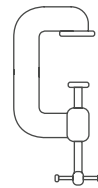
Rubber Mallet



Drop-Saw



Impact Driver/Drill



Clamp

Pre Installation Checklist.



Delivery Inspection.

- Check packs for freight damage on arrival.
- Report any damage to your Knotwood rep within 24 hours.



Unpacking.

- Cut nylon straps and remove the outer wrap.
- Check ends of the profiles and trim if required.
- Take care not to scratch the coated material during handling.



Cutting Tools.

- Compound mitre saw (Aluminium multi-tooth blade)

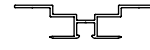


Fasteners.

- Use 304 or 316 grade stainless steel.
- In non-marine zones, hot-dip galvanised fasteners may be used.
- The use of an insulating barrier, a rubber or neoprene washer is required.

Solution Profiles.

Tracks.



KEBT



KEBTS

Brackets.

Compatible Profiles.



KABT2525
Batten Track Clip - 25 x 25mm



KEB2525F



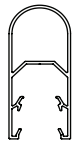
KEB3232F



KEB4040F



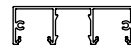
KEB3250FD



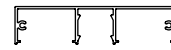
KEB3275FD



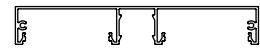
KEB5025F



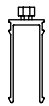
KEB7525F



KEB10025F



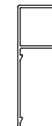
KEB15025F



KABT2550
Batten Track Clip - 25 x 50mm



KEB2550F



KEB2575F



KEB25100F



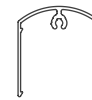
KEB25150F



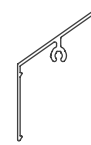
KABT5050
Batten Track Clip - 50 x 50mm



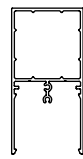
KEB5050F



KEB5054FD



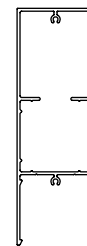
KEB5080FA



KEB10050F



KEB15050FE



KEB15050F



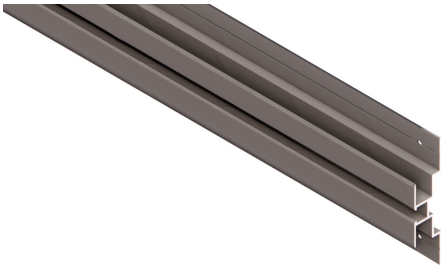
KEB50200FE



KEB50200F

KEBT - Installation.

Previous Considerations.

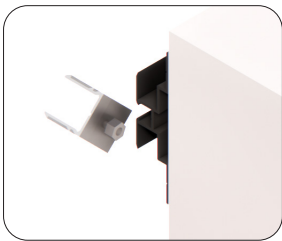


For optimal installation results, ensure the support surface substructure offers sufficient structural integrity for attaching the Batten Track, Clips and Battens (F).

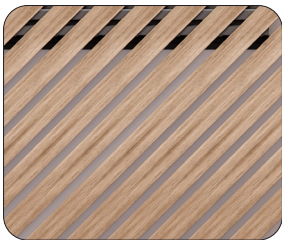
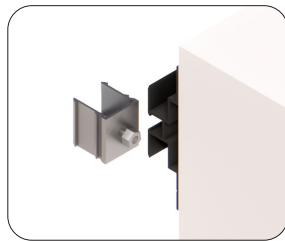
Suitable substructures include top hat sections, metal hollow sections, timber sections, or masonry/concrete structures.

Design Considerations

Option I

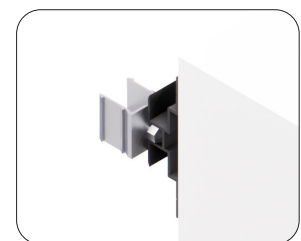
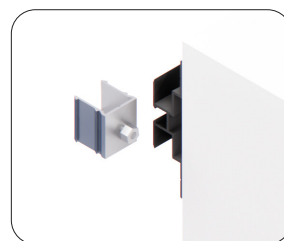
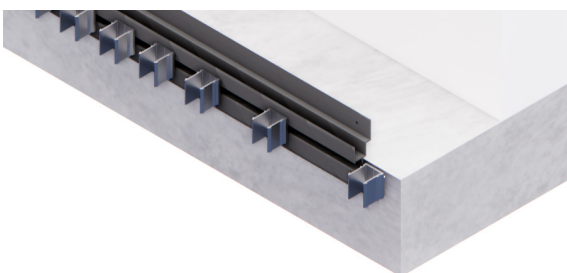
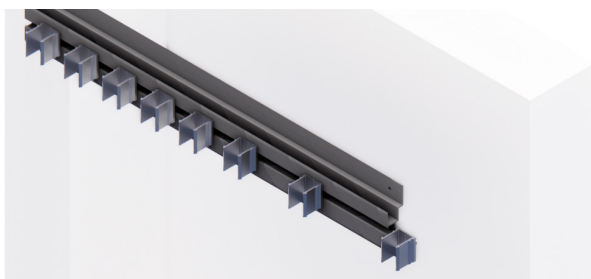


Option II



Assembly Instructions.

Step A.1



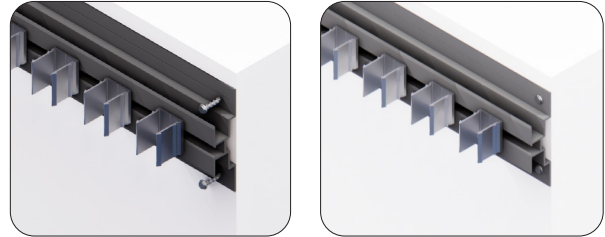
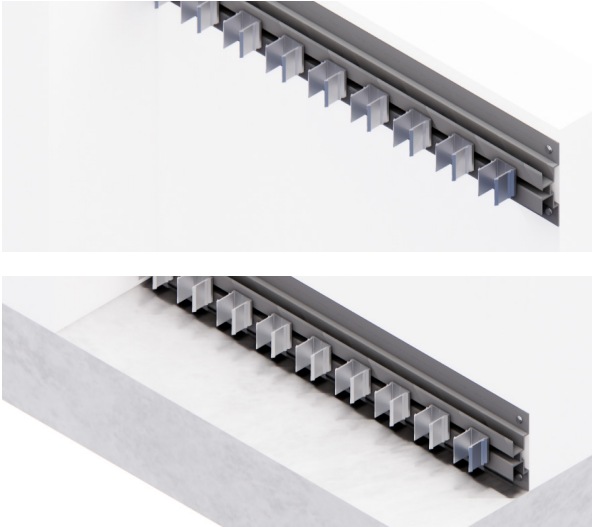
To begin, cut the Batten Track (KEBT) to the desired length and secure it with the appropriate fastening method to the sub-structure.

After securing the Batten Track (KEBT), install the independent Batten Track Clip by sliding the octagonal hanging tab into the Batten Track (KEBT) from one end. Move the Batten Track Clips to the desired position, then secure it by fastening a screw through the pre-drilled centre hole, locking it into the Batten Track (KEBT).

KEBT - Installation.

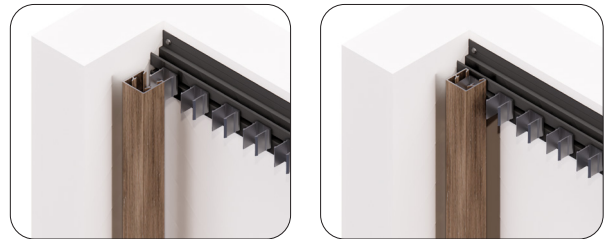
Assembly Instructions.

Step A.2



Continue this process for subsequent Batten Track Clips, ensuring the overall batten screen span accurately aligns with the desired gap spacing before locking each Batten Track Clips in position.

Step A.3



Once the Batten Track Clips are in place, attach the first Batten (F) by pressing it onto the Batten Track Clips until a click is heard.

Step A.4

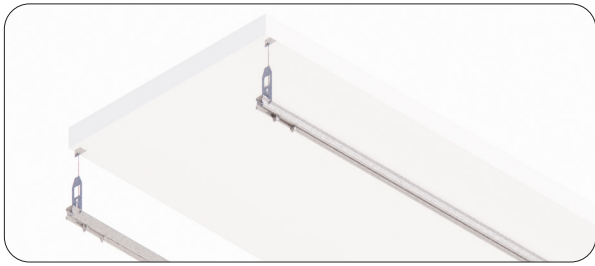


Continue this process for subsequent Battens (F) and Batten Track Clips until the screen is complete.



KEBTS - Installation.

Previous Considerations.



Knotwood's suspended track (KEBTS) is designed to integrate seamlessly with leading third-party ceiling systems. For more information, contact the Knotwood team.

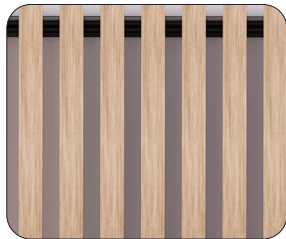
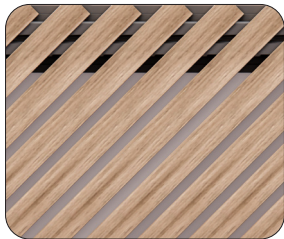
For proper installation, the Knotwood's suspended track (KEBTS) must be attached to a proprietary suspended ceiling substructure. This substructure, which includes the suspended top cross rail and locking key, needs to offer sufficient support and structural integrity for Batten Track, Clips and Battens (F).

Design Considerations

Option I

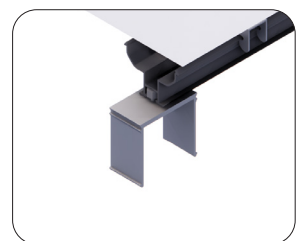
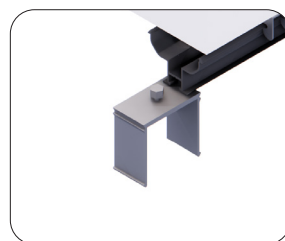
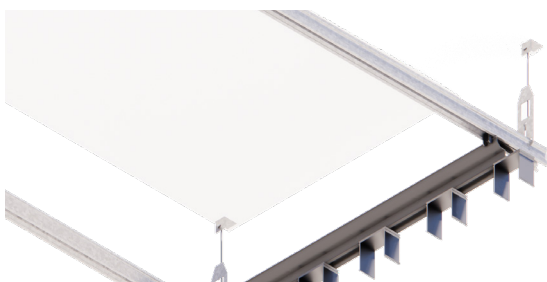
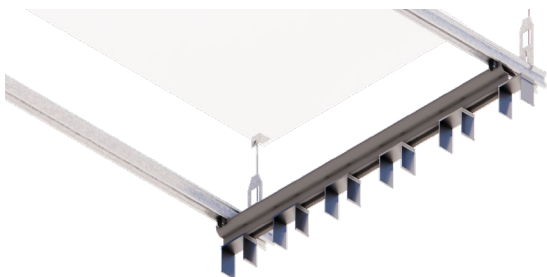


Option II



Assembly Instructions.

Step B.1



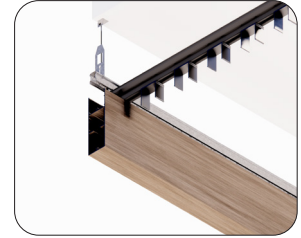
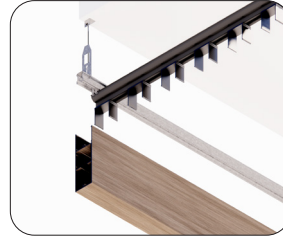
To begin, cut the Suspended Batten Track (KEBTS) to suit the ceiling grid length and install the independent Batten Track Clip by sliding the octagonal hanging tab into the Suspended Batten Track (KEBTS) from one end.

Secure each Suspended Batten Track (KEBTS) by fixing them onto the proprietary suspended grid using the locking key. Move the Batten Track Clip to the desired position, then secure it by fastening a screw through the pre-drilled center hole, to lock them into position.

Installation.

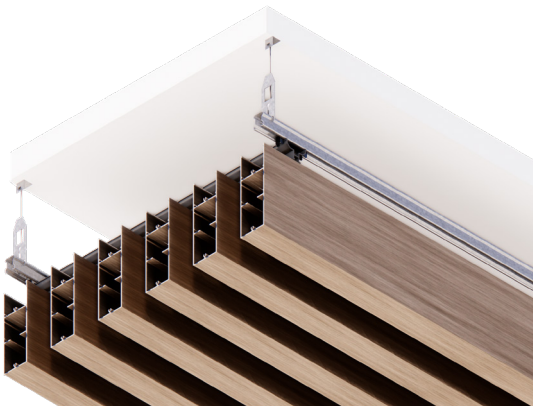
Assembly Instructions.

Step B.2



Once each Batten Track Clip is secured, attach the first Batten (F) by pressing it onto the brackets until it clicks into place.

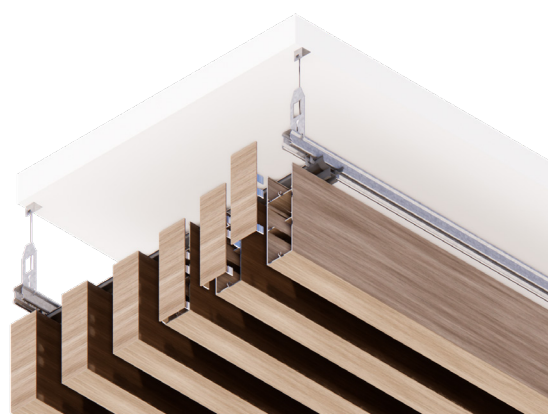
Step B.3



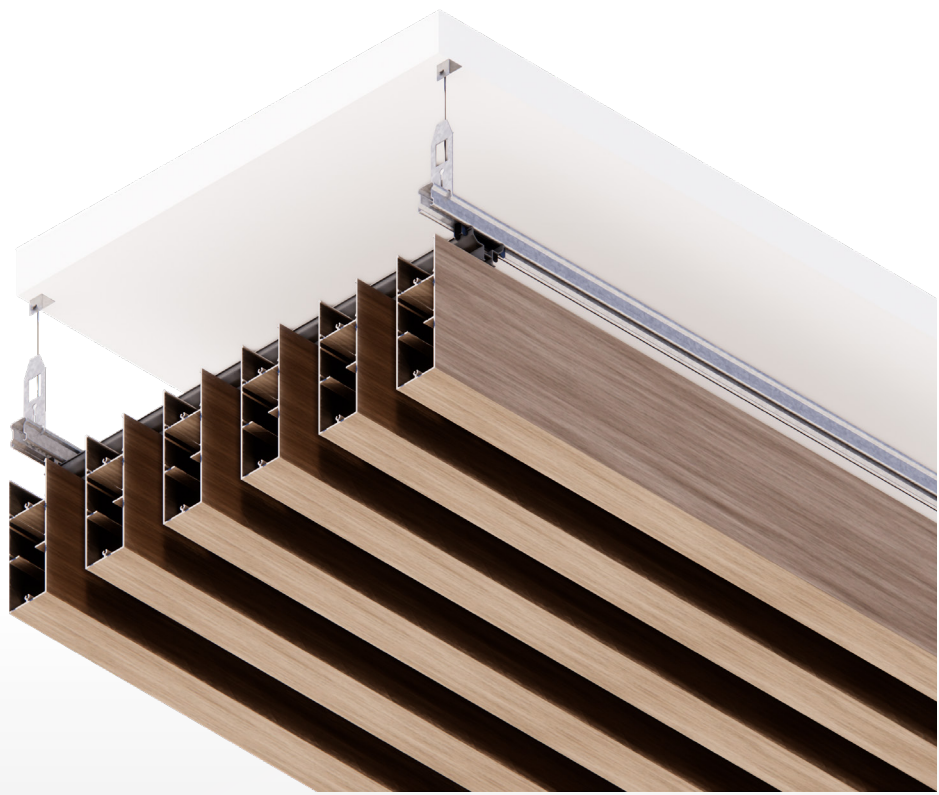
Continue this process for subsequent Battens (F) and Batten Track Clips until the screen is complete.

Endcaps.

Step B.4



Where suspended batten ends are visible, specially designed end caps are available. These end caps can be tapped into place and, if necessary, secured with a suitable metal adhesive.



KNOTWOODTM

KNOTWOOD AUS

sales@knotwood.com.au

1 300 566 896

7/63 Burnside Road,
Stapylton, QLD 4207 Australia

KNOTWOOD USA

sales@knotwood.com

+1 855 566 8966

5555 West Roosevelt Street Suite,
400 Phoenix, AZ 85043 United States

KNOTWOOD UK

sales@knotwood.co.uk

0800 131 3165

Unit 44, 45 Wolston Croft,
Northwich CW8 4DL, United Kingdom