



KNOTWOODTM

Quick Start Guide.

Tab-Lock Boards

Before Installation.

You might need the following tools.



Screws



Level



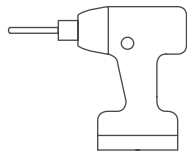
Measuring Tape



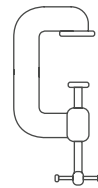
Rubber Mallet



Drop-Saw



Impact Driver/Drill



Clamp

Pre Installation Checklist.



Delivery Inspection.

- Check packs for freight damage on arrival.
- Report any damage to your Knotwood rep within 24 hours.



Unpacking.

- Cut nylon straps and remove the outer wrap.
- Check ends of the profiles and trim if required.
- Take care not to scratch the coated material during handling.



Cutting Tools.

- Compound mitre saw (Aluminium multi-tooth blade)



Fasteners.

- Use 304 or 316 grade stainless steel.
- In non-marine zone, hot-dip galvanised fasteners may be used.

Solution Profiles.

Starters.



KECTS
Tab-Lock - Starter

Clips.



KACC
Cladding - Clip - 45mm

Fixed Gap.



KECT150
Fixed Gap Tab-Lock Board - 150mm

Castellated.



KECT150C
Castellated Tab-Lock Board - 150mm

Weatherboard.



KECT150W
Tab-Lock Weatherboard - 150mm

Trims.



KECFF
Cladding Trim - (F)



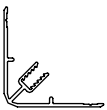
KECFML
Cladding Trim - Top
65mm (M)



KECJF
Cladding Trim - Joiner (F)



KECJM
Cladding Trim - Joiner (M)



KECCF
Cladding Trim - Corner
45mm - Radius (F)



KECCMS
Cladding Trim - Corner
25mm (M)

Installation.

Support Surface Preparation.

Option I



Option II



For optimal installation, we recommend that the substructure includes an adequate sub-frame structure that assures the appropriate level support for attachment of the cladding. This may include; top hat section, metal hollow sections or timber sections.

Assembly Instructions.

Step 1.



Begin by fitting the **Cladding Trim - (F) (KECFF)** to the surrounding perimeter of the selected cladding area, making sure to mitre cut the trim's to fit neatly and correctly.

Step 2.



Once all the trims have been installed around the perimeter, secure the **Tab-Lock - Starter (KECTS)** onto the **Cladding Trim - (F) (KECFF)**.

**In case of vertical application, follow the same steps in a left to right sequence.*

Installation.

Assembly Instructions.

Step 3.



*Tab-Lock Weatherboard - 150mm

Next, position the **Tab-Lock Board** lower edge to hook and connect with the **Tab-Lock - Starter (KECTS)**. Then, swing the board towards the sub-structure.

Step 4.



Once the first **Tab-Lock Board** is in position, attach the **Cladding Clip - 45mm (KACC)** by screwing it into the sub-structure to secure the board.

Step 5.



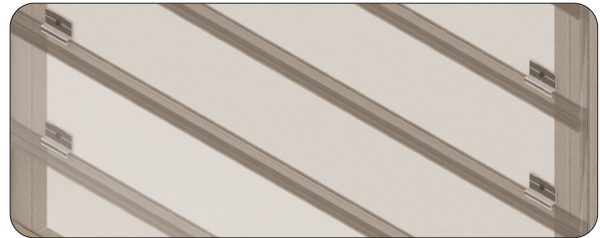
Once the **Cladding Clip 45mm (KACC)** is securely fixed, install the second **Tab-Lock Board** by hooking it into the tab-lock system, working from the bottom upwards.

**In case of vertical application, follow the same steps in a left to right sequence.*

Installation.

Assembly Instructions.

Step 6.



Repeat the process until the cladding surface is fully finished from bottom to top.

**In case of vertical application, follow the same steps in a left to right sequence.*

Step 7.



After all **Tab-Lock Boards** are installed, complete the perimeter by fitting the **Cladding Trim – Top 65mm (M) (KECFML)** onto the **Cladding Trim (F) (KECFF)**

**In case of vertical application, follow the same steps in a left to right sequence.*

External Corners - Installation.

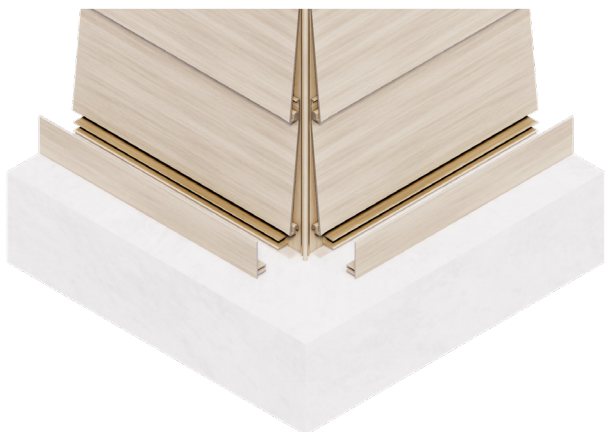
Additional Instructions

Step 1.



Secure the **Cladding Trim (F) (KECFF)** at the top and bottom edges of the wall surfaces. Fix the **Cladding Trim - Corner 25mm (M) (KECCMS)** at the external corner junction.

Step 2.



Proceed with the installation of the tab lock boards, then close the edges by pressing the **Cladding Trim - Top 65mm (M) (KECFML)** into the **Cladding Trim (F) (KECFF)**.

Step 3.



Complete the external corner by pressing the **Cladding Trim - Corner 45mm - Radius (F) (KECCF)** into the **Cladding Trim - Corner 25mm (M) (KECCMS)**.

Internal Corners - Installation.

Additional Instructions

Step 1.



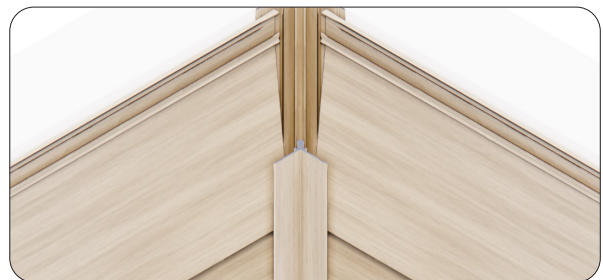
Secure the **Cladding Trim (F) (KECFF)** at the top and bottom edges of the wall surfaces. Fix the **Cladding Trim - Corner 45mm - Radius (F) (KECCF)** at the internal corner junction.

Step 2.



Proceed with the installation of the tab lock boards, then close the edges by pressing the **Cladding Trim - Top 65mm (M) (KECFML)** into the **Cladding Trim (F) (KECFF)**.

Step 3.



Complete the internal corner by pressing the **Cladding Trim - Corner 25mm (M) (KECCMS)** into the **Cladding Trim - Corner 45mm - Radius (F) (KECCF)**.

Joiners - Installation.

Additional Instructions

Step 1.



Attach the **Cladding Trim (F) (KECFF)** to the wall edges, and install the **Cladding Trim Joiner (F) (KECJF)** over the perimeter trim where joints are required.

Step 2.

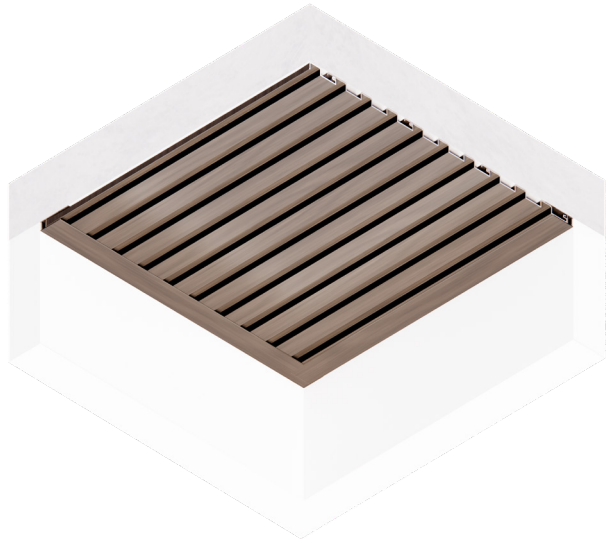


Proceed with the installation of the tab lock boards, then close the edges by pressing the **Cladding Trim - Top 65mm (M) (KECFML)** into the **Cladding Trim (F) (KECFF)**.

Step 3.



Complete the joiner by pressing the **Cladding Trim - Joiner (M) (KECJM)** into the **Cladding Trim Joiner (F) (KECJF)**.



KNOTWOOD™

KNOTWOOD AUS

sales@knotwood.com.au

1 300 566 896

7/63 Burnside Road,
Stapylton, QLD 4207 Australia

KNOTWOOD USA

sales@knotwood.com

1 855 566 8966

5555 West Roosevelt Street Suite,
400 Phoenix, AZ 85043 United States

KNOTWOOD UK

sales@knotwood.co.uk

0 800 131 3165

Unit 44, 45 Wolston Croft,
Northwich CW8 4DL, United Kingdom